



Apparel & Novelties Collection 2026





Collections 2026

Paddock Blue Collection	
Paddock Blue Essentials	4
Paddock Blue Teamwear	9
Paddock Blue Urban	21
Paddock Blue Swimwear and Underwear	25
Paddock Blue Baby	27
Xmas	29
Racing Collection	
Monster Energy Yamaha Racing Collection	30
Fabio Quartararo Collection	33
MotoGP Replica Teamwear	35
World SBK Official Team Replica Collection	37
Jonathan Rea Collection	39
MX Collection	40
70 th Anniversary Collection	47
Faster Sons Collection	50
REVS Collection	52
Scooter Collection	63
Hyper Naked Collection	66
Adventure Collection	68
Riding Gear	70
Luggage	94
Novelties	100

Paddock Blue Collection

Yamaha Motor has been racing 10 days after its creation in 1955, and never stopped since then. Racing is a part of our inspiration and core values and we want to share them with you. When you choose any article from our Racing line, which is worn by all our Official an Supported Teams, you become a member of our Yamaha Racing family.

Paddock Blue Essentials

Paddock Blue Essentials is designed for the whole family to love! Featuring simple, clean designs with standout Yamaha Racing branding, each Essentials item is focused on function and classic Yamaha styling. Wear the range to races, at home, or to work - the Essentials collection is your everyday, go-to wardrobe!

Paddock Blue Essentials Jacket Unisex

NEW

UNISEX

Part No. QMB-26PB3-E0 XX

SIZE CODE: 1S-0S-0M-0L-1L-2L-3L

The Essentials Unisex Jacket has you covered for all seasons. Lightweight but warm, a duck down and feather padding makes it easy to pack and travel with. A must-have for those chilly days waiting for summer!

- 100% nylon shell
- 90% duck down, 10% feather inner
- Printed Yamaha Racing logos
- Inside pocket
- Packable



NEW

UNISEX



Paddock Blue Essentials Sweat Fleece Unisex

Part No. QMB-26BP3-E0 **XX**

SIZE CODE: 1S-0S-0M-0L-1L-2L-3L

Own the racer's look with the Essentials Unisex Sweater. A soft sherpa fleece keeps you warm and super cosy on cold days at the track, with a full-length zip to adjust your comfort. Inspired by the paddock and made to be worn in it!

- 100% polyester sherpa fleece
- Embroidered Yamaha Racing logo
- Elastic cuffs and hem
- Front pockets



Paddock Blue Essentials Hoodie Unisex

NEW

UNISEX

Part No. QMB-26PC3-E0 **XX**

SIZE CODE: 1S-0S-0M-0L-1L-2L-3L

Ideal for year-round use, the Essentials Unisex Hoodie is designed for comfort and function. A drawstring hood gives you adjustable comfort, with Yamaha Racing branding to complete the look.

- 100% cotton sweat fabric
- Brushed cotton inner
- Printed Yamaha Racing logos
- Kangaroo pocket
- Lined hood



NEW

UNISEX

Paddock Blue Essentials T-shirt Unisex

Part No. QMB-26BB3-E0 **XX**

SIZE CODE: 1S-0S-0M-0L-1L-2L-3L

Simple, striking and classic Yamaha, the Essentials Unisex T-Shirt is the ideal base layer, made from 100% cotton with Yamaha Racing chest and arm branding. From riding to working or relaxing, this is a tee for every Yamaha fan, everywhere.

- 100% cotton
- Printed Yamaha Racing logos
- Ribbed neck



QMB-26PB3-E0 **XX**



QMB-26BP3-E0 **XX**

NEW

UNISEX

Paddock Blue Essentials Beanie Adult

Part No. QMB-26FH3-E0-00

Bright and playful, the Essentials Adult Beanie is cozy and stylish for colder days. Created in a two-tone melange knit with embroidered Yamaha Racing logos, it features a bobble for extra style. Stay warm, stay comfy!

- 100% acrylic
- Two-tone melange knit
- One-size-fits-all



NEW

Paddock Blue Essentials Sweater Kids

Part No. QMB-26FT4-E0 **XX**

SIZE CODE: 06-08-10-12-14-16-18

Kids can own the racer's look too with the Essentials Kid's Sweater. A soft sherpa fleece keeps them warm and cosy for cold days outdoors, with a full-length zip for adjustable comfort.

- 100% polyester sherpa fleece
- Embroidered Yamaha Racing logos
- Elastic cuffs and hem
- Front pockets

*No	Size	Age
06	92	1,5-2 yrs
08	104	3-4 yrs
10	116	5-6 yrs
12	128	7-8 yrs
14	140	9-10 yrs
16	152	11-12 yrs
18	164	13-14 yrs



NEW

Paddock Blue Essentials Beanie Kids

Part No. QMB-26FG6-E8-00

Keep the young ones warm with the Essentials Kid's Beanie. Two-tone melange and a bobble add a playful touch, with embroidered Yamaha Racing branding to show off their passion.

- 100% acrylic
- Two-tone melange knit
- Ages 6-10



Paddock Blue Teamwear

Designed to be at home in any paddock, the Teamwear collection is Yamaha Racing to the core. With items for men, women and kids, everyone can find something for comfort, style and function, whether at work, home or the racetrack. From tops to shorts and headwear, the Teamwear has you covered from lights out.

NEW

UNISEX

Paddock Blue Team Jacket Unisex

Part No. QMB-26FM1-E0 **xx**

SIZE CODE: 1S-0S-0M-0L-1L-2L-3L

Your cold weather protection is right here in the Teamwear Unisex Jacket. Water repellent and with a comfort padding, it features a lined hood for extra softness. Front pockets and an inner pocket provide added function for days outside.

- 100% polyester outer and padding, 100% nylon lining
- Printed Yamaha Racing logos
- Side panel graphics
- Ribbed cuffs



NEW



Paddock Blue Team Softshell Men

Part No. QMB-26FK1-E0 **XXX**

SIZE CODE: 1S-0S-0M-0L-1L-2L-3L

Designed for casual wear all year, the Teamwear Men's Softshell is a hooded jacket ideal for Yamaha fans. Front and chest pockets offer extra function outdoors, with a full-length zip for adjustable comfort.

- 96% polyester, 4% spandex softshell
- Embroidered Yamaha Racing logos
- Side panel graphics
- Embossed inner fleece
- Hood with stoppers



NEW



Paddock Blue Team Sweat Zip Men

Part No. QMB-26FS1-E0 **XX**

SIZE CODE: 1S-0S-0M-0L-1L-2L-3L

A technical design for paddock use, the Teamwear Men's Sweater is a zip-up hoodie that makes a perfect middle layer. Featuring a chin guard and tight hood opening for extra comfort, the sweater also uses flat seams for a smooth shape and outline.

- 56% cotton, 44% polyester tech fleece
- Embroidered Yamaha Racing logos
- Side panel graphics
- Ribbed hem and cuffs

Paddock Blue Team Bodywarmer Unisex

NEW

UNISEX

Part No. QMB-26321-E0 **XX**

SIZE CODE: 1S-0S-0M-0L-1L-2L-3L

Lightweight and super functional, the Teamwear Unisex Bodywarmer keeps your core warm and arms free with its padded inner. A full-length zip offers extra comfort, with a bag for easily packing your bodywarmer away.

- 100% nylon outer
- 90% duck down, 10% duck feather inner
- Printed Yamaha Racing logos
- Packable bag included





QMB-26GP1-E0 XX



QMB-26321-E0 XX

Paddock Blue Team Long Sleeve Men

NEW

Part No. QMB-26GP1-E0 XX

SIZE CODE: 1S-0S-0M-0L-1L-2L-3L

Like its short-sleeved sibling, the Teamwear Men's Long Sleeve T-Shirt makes a perfect base layer. A classic crew neck design, the stand-out branding and full-length sleeves make it a comfortable, cool top.

- 50% cotton, 50% polyester
- Printed Yamaha Racing logos
- Side panel graphics
- Ribbed neck



NEW



Paddock Blue Team Polo Men

Part No. QMB-26BP1-E0 **XX**

SIZE CODE: 1S-0S-0M-0L-1L-2L-3L

When you want to look a little classier, the Teamwear Men's Polo has you covered. A press button closure offers adjustable comfort, with a cyan striped collar for added smartness.

- 50% cotton, 50% polyester
- Embroidered Yamaha Racing logos
- Side panel graphics
- Ribbed collar



NEW

Paddock Blue Team T-shirt Men

Part No. QMB-26FF1-E0 **XX**

SIZE CODE: 1S-0S-0M-0L-1L-2L-3L

The ultimate base layer, the Teamwear Men's T-Shirt is simple and subtle. A classic crew neck design, the tee features stand-out branding for a staple Yamaha item. Every fan's must-have!

- 50% cotton, 50% polyester
- Printed Yamaha Racing logos
- Side panel graphics
- Ribbed neck with contrast stripe



NEW



Paddock Blue Team Long Pants Men

Part No. QMB-26EF1-B0 XX

SIZE CODE: 1S-0S-0M-0L-1L-2L-3L

Stylish, comfortable and flexible - what more could you want from your pants? The Teamwear Men's Pants are made from lightweight stretch fabric, with multiple pockets for added function for leisure.

- 89% polyamide, 11% spandex
- Embroidered Yamaha Racing logos
- 2 front pockets, 1 back pocket
- 1 side zip pocket



Paddock Blue Team Short Pants Men

NEW

Part No. QMB-26DF1-B0 XX

SIZE CODE: 1S-0S-0M-0L-1L-2L-3L

Ready for work or leisure, the Teamwear Men's Shorts are a lightweight build in stretch fabric. Easily adjusted with a buckle and elastic waist, these subtly branded shorts are designed for regular outdoor use. Let those legs breathe!

- 89% polyamide, 11% spandex
- Embroidered Yamaha Racing logos
- 2 front pockets, 1 back pocket
- 1 side zip pocket





QMB-26EF1-B0 **XX**



QMB-26DF1-B0 **XX**

Paddock Blue Team Softshell Women

NEW

Part No. QMB-26FJ2-E0 **XX**

SIZE CODE: 1S-0S-0M-0L-1L-2L

Designed for casual wear all year, the Teamwear Women's Softshell is a hooded jacket ideal for Yamaha fans. Front and chest pockets offer extra function outdoors, with a full-length zip for adjustable comfort.

- 96% polyester, 4% spandex softshell
- Embroidered Yamaha Racing logos
- Side panel graphics
- Embossed inner fleece
- Hood with stoppers



NEW



Paddock Blue Team Sweater Women

Part No. QMB-26GT2-E0 **XX**

SIZE CODE: 1S-0S-0M-0L-1L-2L

A technical design for paddock use, the Teamwear Women's Sweater is a zip-up hoodie that makes a perfect middle layer. Featuring a chin guard and tight hood opening for extra comfort, the sweater also uses flat seams for a smooth shape and outline.

- 56% cotton, 44% polyester tech fleece
- Embroidered Yamaha Racing logos
- Side panel graphics
- Ribbed hem and cuffs

Paddock Blue Team Polo Women

NEW

Part No. QMB-26FT2-E0 **XX**

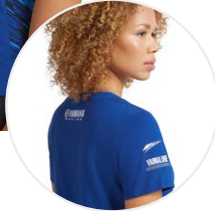
SIZE CODE: 1S-0S-0M-0L-1L-2L

When you want to look a little classier, the Teamwear Women's Polo has you covered. A press button closure offers adjustable comfort, with a dark toned collar for added smartness.

- 50% cotton, 50% polyester
- Embroidered Yamaha Racing logos
- Side panel graphics
- Ribbed collar



NEW



Paddock Blue Team T-shirt Women

Part No. QMB-26FF2-E0 **xx**

SIZE CODE: 1S-0S-0M-0L-1L-2L

The ultimate base layer, the Teamwear Women's T-Shirt is simple and subtle. A classic crew neck design, the tee features stand-out branding for a staple Yamaha item. Every fan's must-have!

- 50% cotton, 50% polyester
- Printed Yamaha Racing logos
- Side panel graphics
- Ribbed neck with contrast stripe

QMB-26GT2-E0 **xx**



QMB-26FT2-E0 **xx**



NEW



Paddock Blue Team Jacket Kids

Part No. QMB-26JJ4-E0 **XX**

SIZE CODE: 06-08-10-12-14-16-18

The kids' cold weather protection is right here in the Teamwear Kid's Jacket. Water repellent and with a comfort padding, it features a lined hood for extra softness. Front pockets and an inner pocket give them room for whatever bits and pieces they find!

- 100% polyester outer and padding, 100% nylon lining
- Printed Yamaha Racing logos
- Side panel graphics
- Ribbed cuffs

*No	Size	Age
06	92	1,5-2 yrs
08	104	3-4 yrs
10	116	5-6 yrs
12	128	7-8 yrs
14	140	9-10 yrs
16	152	11-12 yrs
18	164	13-14 yrs



NEW

Paddock Blue Team Softshell Kids

Part No. QMB-26FJ4-E0 **XX**

SIZE CODE: 06-08-10-12-14-16-18

Perfect for everyday comfort wear, the Teamwear Kid's Softshell is a hooded jacket for young Yamaha fans. Front and chest pockets offer extra function, with a full-length zip for adjustable comfort outdoors.

- 96% polyester, 4% spandex softshell
- Embroidered Yamaha Racing logos
- Side panel graphics
- Embossed inner fleece
- Hood with stoppers

*No	Size	Age
06	92	1,5-2 yrs
08	104	3-4 yrs
10	116	5-6 yrs
12	128	7-8 yrs
14	140	9-10 yrs
16	152	11-12 yrs
18	164	13-14 yrs



NEW



Paddock Blue Team T-shirt Kids

Part No. QMB-26FS4-E0 **xx**

SIZE CODE: 06-08-10-12-14-16-18

The first choice for a kid's base layer, the Teamwear Kid's T-Shirt is a classic crew neck design. Stand-out branding makes this a must-have for junior Yamaha fans!

- 50% cotton, 50% polyester
- Printed Yamaha Racing logos
- Side panel graphics
- Ribbed neck with contrast stripe



*No	Size	Age
06	92	1,5-2 yrs
08	104	3-4 yrs
10	116	5-6 yrs
12	128	7-8 yrs
14	140	9-10 yrs
16	152	11-12 yrs
18	164	13-14 yrs

NEW

UNISEX

Paddock Blue Beanie Adult

Part No. QMB-26FL3-E0-00

A classic Yamaha blue design, the Teamwear Adult Dark Blue Beanie offers a comfy unisex fit. With a sturdy knitted design and rubber logo patch, this beanie offers you plenty of warmth on colder days.

- 100% cotton
- Injected rubber Yamaha Racing badge
- One-size-fits-all



NEW

UNISEX

Paddock Blue Beanie Adult

Part No. QMB-26FK3-E0-00

Double-layered for comfort and warmth, the Teamwear Adult Blue Beanie features a design in classic Yamaha tones. A simple logo patch finishes off the look.

- 95% acrylic, 4% nylon, 1% spandex
- Woven logo patch
- One-size-fits-all



NEW

UNISEX

Paddock Blue Cap Adult

Part No. QMB-26FM3-E0-00

The Teamwear Adult's Cap offers a bold look perfect for bright days. Made in Yamaha blue with a stylish cyan peak, you don't want to forget this cap when the sun shows up!

- 100% cotton
- Embroidered Yamaha logo
- Peak graphic print
- Plastic adjustment strap



Paddock Blue Urban

Yamaha meets fashion with a bold new look in the Urban range. Capturing the heart of Paddock Blue in a style fit for the streets, Urban features oversized, comfortably loose fits for relaxed times with friends. Easy to wear, easy to love!

Paddock Blue Urban Sweater Unisex

Part No. QMB-26ST1-E2 **xx**

SIZE CODE: 1S-0S-0M-0L-1L-2L-3L

Whether you're at home or out with friends, the Urban Unisex Sweater has you covered. This design features colour contrast panels, with Yamaha embroidery for subtle branding. So cool you won't even break a sweat!

- 80% cotton, 20% polyester
- Crew neck
- Colour block panels
- Ribbed collar and hem



NEW



Paddock Blue Urban Jog Pants Men

Part No. QMB-26FP1-E2 XXX

SIZE CODE: 1S-0S-0M-0L-1L-2L-3L

Relaxed and easy-fitting, the Urban Men's Jog Pants are a super-comfy blend of black & white. Subtle embroidered Yamaha branding on the hip adds extra style with a distinct white side stripe. Perfect legwear for chilled out moments.

- 80% cotton, 20% polyester Sweat Fabric
- Side panel stripe
- Elastic waistband with drawstrings

UNISEX

Paddock Blue Urban T-shirt Unisex

NEW

Part No. QMB-26FT1-E2 XXX

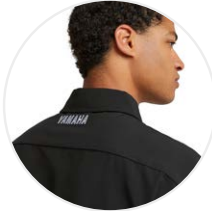
SIZE CODE: 1S-0S-0M-0L-1L-2L-3L

A staple of the range, the Urban Unisex T-Shirt is made in heavy cotton for an enduring look. A wide fit with boxy arms give breathability and comfort, with colour-contrast panels to stand out from the crowd.

- 100% heavy cotton
- Tricolor design
- Box fit



NEW



Paddock Blue Urban Woven Shirt Men

Part No. QMB-26FJ1-B4 xx

SIZE CODE: 1S-0S-0M-0L-1L-2L-3L

Styled all the way, the Urban Men's Polo Shirt pairs perfectly with tees for a sharp look. Yamaha embroidery adds class, with a contrasting side stripe panel for extra 'wow'.

- 92% polyester, 8% elastane
- Box fit
- Button closure

NEW

UNISEX

Paddock Blue Urban Cap Men

Part No. QMB-26FS3-E2-00

A classic design, the Urban Adult Cap is a blue, black & white item with Yamaha running through it. Air holes and a metal closure provide comfort for all sizes. Add a dash of fashion to your everyday wardrobe!

- 100% cotton
- Embroidered Yamaha logo
- Colour contrast panels
- Metal snap closure





QMN-26JF1-E2 **XX**



QMB-26UT1-E0 **XX**

Paddock Blue Sneakers

Part No. QMN-26JF1-E2 **XX**

SIZE CODE: 41-42-43-44-45-46

Created for the new Urban range, the Paddock Blue Sneakers are a slick design in iconic blue, white and black. With a sturdy build and regular fit, these comfy sneakers are a brand-new design made to rock the streets, Yamaha style.

- PU and textile upper
- Rubber sole
- Embossed Yamaha logo on tongue
- Printed Yamaha logo on back
- Regular fit

NEW



NEW



Paddock Blue Boardshorts Men

Part No. QMB-26UT1-E0 **XX**

SIZE CODE: 0S-0M-0L-1L-2L

Take your Yamaha passion to the water with the Men's Boardshorts. Lightweight and stretchy, these cool shorts feature a graphic side panel and embroidered Yamaha logos. A drawstring waist and two pockets offer extra comfort on days at the beach or pool.

- 90% polyester, 10% elastane
- 4-way stretch material
- Quick-drying material
- Two front pockets

NEW

Paddock Blue Swimshorts Boy

Part No. QMB-26UT3-E0 **XX**

SIZE CODE: 08-10-12-14-16-18

Take your kid's Yamaha passion to the water with the Kid's Swim Shorts. Lightweight and stretchy, these shorts feature a cool, all-over Yamaha camo graphic. Embroidered Yamaha branding gives a final stylish touch, with an elastic waistband and drawstring for adjustable comfort.

- 90% polyester, 10% elastane
- Inner mesh lining
- Elastic waistband



*No	Size	Age
06	92	1,5-2 yrs
08	104	3-4 yrs
10	116	5-6 yrs
12	128	7-8 yrs
14	140	9-10 yrs
16	152	11-12 yrs
18	164	13-14 yrs

NEW



Paddock Blue Underwear Men Gift Set

Part No. QMB-26UU1-E0 **XX**

SIZE CODE: 0S-0M-0L-1L-2L

Our Men's Underwear is a comfy pair of boxer-style briefs in stylish Yamaha tones, with one pair in classic blue with Yamaha branding, and one pair with a cool motorcycle print in white.

- 95% cotton, 5% elastane
- Printed Yamaha design
- Soft elastic waistband



Paddock Blue Underwear Boy Gift Set

NEW

Part No. QMB-26UI3-E0 **XX**

SIZE CODE: 08-10-12-14-16-18

A unique, cool addition to kids' wardrobes, the Boy's Underwear is a comfy pair of boxer-style briefs in stylish Yamaha tones. One pair is classic blue with Yamaha branding, and one pair with a cool motorcycle print in white.

- 95% cotton, 5% elastane
- Printed Yamaha design
- Soft elastic waistband



*No	Size	Age
08	104	3-4 yrs
10	116	5-6 yrs
12	128	7-8 yrs
14	140	9-10 yrs
16	152	11-12 yrs
18	164	13-14 yrs

Paddock Blue Baby

Rev hearts from their first words with the Paddock Blue Baby collection! From newborns to toddlers learning to walk, this range offers parents comfy, stylish and durable clothing for their youngest. They'll be ready to ride in no time!

Paddock Blue Toddler Set Sweat + Jogpants

Part No. QMB-26KB6-E0 **xx**

SIZE CODE: 04-06-08-10-12

The Paddock Blue Toddler Set gets mini Yamaha fans ready for the day with a comfy sweatshirt and jogging pants. Made from soft cotton in classic Yamaha blue with printed logos, this set helps them run before they can ride!

- 100% cotton, brushed inside
- Printed Yamaha logos
- Ribbed cuffs and hem
- Ages 9-12, 18-24 months / 3-4, 5-6, 7-8 years

*No	Size	Age
04	80	9-12 months
06	92	18-24 months
08	104	3-4 yrs
10	116	5-6 yrs
12	128	7-8 yrs

NEW



NEW



Paddock Blue Baby Gift Pack

Part No. QMB-26KC6-E0 XX

SIZE CODE: 0A-01-03

No one is too young to love Yamaha! The Paddock Blue Baby Gift Pack helps the youngest family members dress, with a playsuit, bib and beanie, all in classic Yamaha blue with printed logos.

- 100% cotton, brushed inside
- Push-button crotch opening
- Contrast stitching
- Ages 0 till 6-8 months

*No	Age
0A	0 months
01	2-4 months
03	6-8 months

Paddock Blue Baby Gift Pack Difrax

NEW

Part No. QMN-26DIF-E0-12

Yamaha x Difrax. Welcome the champions in the making to the Yamaha family with this cute collab. This Baby Gift Pack includes a 1 S-Bottle and 2 pacifiers, Perfect for easy feeding and soothing.

- S-bottle of 250 ml with Yamaha Racing branding
- Suitable for 0-6 months
- S-bottle: measuring cap, size S teat, ergonomic S-shape, anti-colic valve, screw-off base with ventilation holes
- 1 regular pacifier and 1 pacifier with glow in the dark know
- Pacifier: butterfly shaped shield, optimal air supply, firm teat helps decrease dependency on a pacifier
- Packed in a giftpack
- In collaboration with Difrax



NEW

UNISEX

Xmas Sweater Unisex

Part No. QMB-26XMA-E0 **xx**

SIZE CODE: SM-LX-XL

Santa Claus, on a Yamaha Ténéré, in the snow - do Christmas sweaters get any cooler? The Xmas Unisex Sweater in iconic Yamaha blue features an exclusive printed graphic on a comfy unisex fit. Guaranteed to wow the Christmas jumper contest at work!

- 80% cotton, 20% polyester
- Sweat fabric
- Printed Yamaha Xmas design
- Ribbed hem and cuffs



*No	Size
SM	S - M
LX	L - XL
XL	XXL - XXXL



Monster Energy Yamaha Racing Collection

Monster Energy Yamaha Racing collection features simple-but-iconic colours and logos to create apparel ready for the racetrack. Containing upper body and headwear, with bold Yamaha Racing and Monster Energy branding, one of motorsport's most recognised collaborations.

Available during Q2 2026.

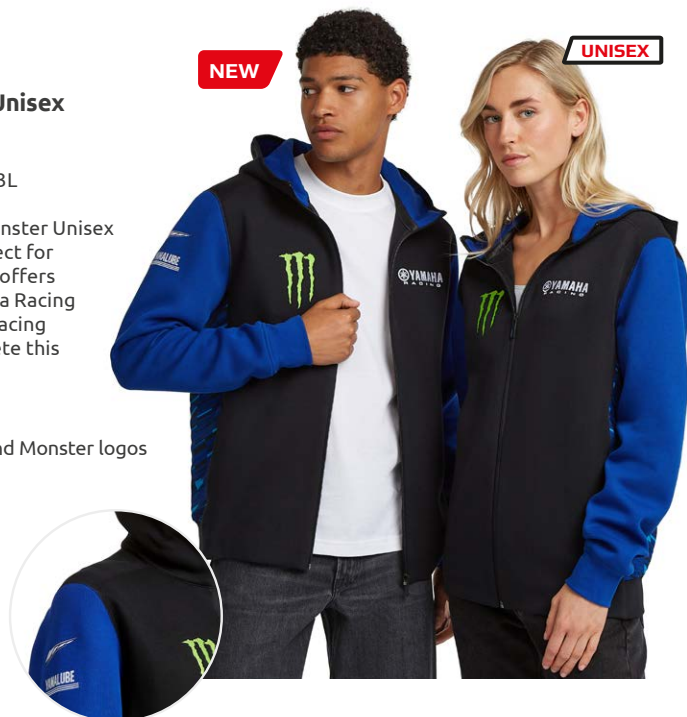
Monster Energy Sweater Unisex

Part No. QMB-26M05-B4 **XX**

SIZE CODE: 1S-0S-0M-0L-1L-2L-3L

Stylish and comfortable, the Monster Unisex Hoodie in black and blue is perfect for everyday wear. A full-length zip offers adjustable comfort, with Yamaha Racing and Monster logos capturing a racing feel. Side panel graphics complete this slick design.

- 56% cotton, 44% polyester
- Embroidered Yamaha Racing and Monster logos
- Full-length zip
- Front pockets
- Side panel graphic



NEW

UNISEX



Monster Energy T-shirt Unisex

Part No. QMB-26M0N-B4 **XX**

SIZE CODE: 1S-0S-0M-0L-1L-2L-3L

Simple and iconic, the black-blue Monster Unisex T-Shirt makes an ideal base layer. A comfy single jersey blend features a crew neck with printed Yamaha Racing and Monster logos. Side panel graphics add extra colour to this paddock essential.

- 50% cotton, 50% polyester
- Printed Yamaha Racing and Monster logos
- Side panel graphics
- Ribbed crew neck collar



NEW

UNISEX

Monster Energy Cap Adult

Part No. QMB-26M03-B4-00

Make a statement in the sun with the Monster Unisex Adult Cap. A classic baseball style in black and blue, it features Yamaha Racing and Monster logos on the peak, front and side for an all-around racing look. Ventilation holes and metal closure make it a comfortable fit for all sizes!

- 100% cotton
- Embroidered Yamaha Racing and Monster logos
- Graphic print side panels
- Metal snap closure



NEW



Monster Energy Riding Softshell Men

Part No. QMA-26M0N-B0 **XX**

SIZE CODE: 0S-0M-0L-1L-2L

Channel the MotoGP spirit like never before with the Monster Men's Riding Softshell. Featuring removable Warrior Lite shoulder and elbow protectors, this jacket also fits a back protector. A fixed hood keeps the elements at bay off the bike, while reflective panels enhance visibility for other road users at night. A fully functional, super cool riding jacket that race fans need in their life!

- 100% polyester softshell outer, 100% polyester mesh lining
- Yamaha Racing and Monster logos
- Cyan graphic lining
- CE EN 17092-4:2020 class A
- Warrior Lite CE EN 1621-1 level 2 shoulder and elbow protectors
- Waterproof inner pocket
- Cuff holes for thumbs
- Option for back protector A18-PR101-B0-LX

QMA-26M0N-B0 **XX**



QMB-26M0S-B4 **XX**



Fabio Quartararo Collection

Attention fans of 'El Diablo'! Celebrating Yamaha's MotoGP star Fabio Quartararo, this capsule collection is right at home watching the Frenchman in the premier class of motorcycle racing. With a tee, sweater and cap to choose from, Fabio supporters everywhere can watch their GP hero in style.

Fabio Quartararo T-shirt Men

Part No. B25-QA110-E1 **XX**

SIZE CODE: 0S-0M-0L-1L-2L

The staple of the 'El Diablo' fan's wardrobe, the Quartararo Men's T-Shirt in black and blue is dominated by Fabio's iconic red '20'. Yamaha Racing logos complete the design to make it ready for racing action.

- 100% cotton
- Printed Yamaha Racing and Quartararo logos
- Round neck



UNISEX



Fabio Quartararo Cap Men

Part No. B25-QA121-EI-00

Keep the sun at bay and show your love for Fabio with the Quartararo Adult Cap! This 5-panel cap in Yamaha blue and black features 'El Diablo's' iconic red '20' on the front, with Yamaha Racing on the peak. Printed side panel graphics and white piping add extra touches, with vent holes and an adjustable strap for all-over comfort.

- 100% cotton
- Embroidered Yamaha Racing and Quartararo logos
- Graphic print side panels
- Adjustable plastic closure



MotoGP Replica Teamwear

Developed for performance at the pinnacle of motorcycle racing, the MotoGP Replica collection is nothing less than iconic. Dressing the Monster Energy Yamaha MotoGP Team for travel and work at race circuits around the world, this black-with-blue collection is a perfect recreation of the team's official clothing. Wear at home or in the grandstands and support Yamaha's premier racing squad!

Monster Energy® Yamaha MotoGP Team Replica Polo Men

Part No. B25-GP103-B4 **XX**

SIZE CODE: 0S-0M-0L-1L-2L

The ultimate in smart paddock wear, the MotoGP Replica Men's Polo is stylish and ready for action. Featuring stylish sublimated prints and official team logos, this is one for long weekends spent watching the races.

- 100% polyester
- Printed Yamaha Racing and sponsor logos
- Sublimated side print mesh
- Button closure





Monster Energy® Yamaha MotoGP Team Replica T-shirt Men

Part No. B25-GP104-B4 **XX**

SIZE CODE: 0S-0M-0L-1L-2L

From garage set up to home, the MotoGP Replica Men's T-Shirt is a staple of the MotoGP collection. Black with side panel graphics and official team logos, this tee makes an ideal base layer for race fans.

- 100% polyester
- Printed Yamaha Racing and sponsor logos
- Sublimated side print mesh
- Ribbed collar

Monster Energy® Yamaha MotoGP Team Replica Cap

Part No. B25-GP109-B4-00

Keep the sun from your eyes and show some Yamaha love with the MotoGP Replica Adult Cap. A 5-panel design, this blue-black cap features official team logos with a stylish side panel graphic. Vent holes and an adjustable strap offer all-over comfort for all sizes.

- 100% polyester
- Woven team badge
- Embroidered Yamaha Racing logos
- Printed side panels
- Macron peak logo



World SBK Official Team Replica Collection

Ready to take on the world's premier production-based motorcycle championship, the WSBK collection is a capsule taken straight from the paddock of World Superbikes. Presented in iconic Yamaha blue, the range features official team and sponsor logos to capture the spirit of Yamaha Racing's legendary Superbike activities

Yamaha WorldSBK Official Team Replica Sweater Men

Part No. B25-SB120-E0 **XX**

SIZE CODE: 1S-0S-0M-0L-1L-2L-3L

Stylish and comfortable, the WSBK Men's Sweater in two-tone blue and dark blue is perfect for everyday wear. A full-length zip and hood offers adjustable comfort, with official team logos capturing a racing feel. A slick design ready for Superbike action.

- 60% polyester, 40% cotton double face
- Printed Yamaha Racing and sponsor logos
- 3 front zip pockets
- High neck hood





Yamaha WorldSBK Official Team Replica Polo Men

Part No. B25-SB119-E0 **XX**

SIZE CODE: 1S-0S-0M-0L-1L-2L-3L

The ultimate in smart paddock wear, the WSBK Men's Polo is stylish and ready for action. Blue with dark blue sleeves and collar, official team logos and a button closure, this is one for long weekends spent watching the races.

- 50% cotton, 50% polyester pique
- Printed Yamaha Racing and sponsor logos
- Button closure

Yamaha WorldSBK Official Team Replica T-shirt Men

Part No. B25-SB112-E0 **XX**

SIZE CODE: 1S-0S-0M-0L-1L-2L-3L

From garage set up to home, the WSBK Replica Men's T-Shirt is a staple of the WSBK collection. Blue with dark blue raglan sleeves and official team logos, this tee makes an ideal base layer for race fans.

- 50% cotton, 50% polyester
- Printed Yamaha Racing and sponsor logos
- Crew neck





Yamaha WorldSBK Official Team Replica Cap Men

Part No. B25-SB111-E0-00

Keep the sun from your eyes and show some Yamaha love with the WSBK Adult Cap. A 5-panel design, this cap features official team logos on the front and peak. Vent holes and an adjustable strap offer all-over comfort for all sizes.

- 100% cotton
- Printed Yamaha Racing and sponsor logos
- One-size-fits-all

JONATHAN REA

Jonathan Rea Cap Adult

Part No. B24-REA03-E0-00

Essential for sunny race days, the Jonathan Rea Adults Cap is a must-have accessory for fans of the 6-time Champion. 100% cotton in Paddock Blue, the unisex cap features a curved black peak, mesh back, adjustable strap and ventilation holes for day-long comfort. The look is completed with an embroidered '65' on the front and 'JR' on the back. Printed Yamaha logos on finish off the detailing that every Jonny fan needs in their collection!

- 100% Cotton
- Embroidered '65' and JR logo
- Printed and 3D Yamaha Racing and sponsor logos
- Unisex, one size fits all adults
- Ventilation holes



MX Collection

There's always time for motocross! The MX collection offers a full wardrobe of Yamaha MX gear, offering jerseys, pants, gloves and headwear to help you rock the motocross look in the saddle of your Off-Road Yamaha. Developed in collaboration with the iconic Alpinestars, the MX collection offers only the highest quality gear.

MX Jersey

NEW

Part No. QM2-6MX01-E8 **XX**
SIZE CODE: 1S-0S-0M-0L-1L-2L

The MX Men's Jersey lets you hit the dirt in style! Created to enhance performance and to stand out, this jersey features all-over sublimated print. Optimised for riding focus, the jersey's seamless cuffs, neck and underarms offer maximum comfort, with moisture wicking, mesh inserts and stitchless arm pits for airflow.

- 98% polyester, 2% elastane
- Sublimated Yamaha and Alpinestars print
- Seamless tape welded neck
- Laser perforations for airflow and ventilation
- Ergonomic semi-raglan sleeves



NEW



MX Pant Men

Part No. QM2-6MXP1-E8 **XX**

SIZE CODE: 28-30-32-34-36-38

Saddle up for some serious motocross with the MX Men's Pants. Stretch panels offer total freedom in the seat, with ripstop fabric for durability when things get heavy. 3D knee construction enhances track performance, with an overlapping Velcro waist for a secure fit. Get out and show the track who the boss is!

- 75% polyester, 14% polyamide, 5% goat leather
- 100% polyester lining
- Yamaha and Alpinestars print
- 4-way stretch inserts for free movement
- Inner waist silicone for grip
- Abrasion-resistant seat area

MX Glove Men

NEW

Part No. QM2-6MXG1-E8 **XX**

SIZE CODE: 1S-0S-0M-0L-1L-2L

Your MX outfit wouldn't be complete without the MX Men's Gloves! With a breathable stretch upper, silicone finger grip patches and stretch wrists, this is a glove for dominating the track with! Reinforcements on the thumb, palm and knuckles provide added protection, with a stylish all-over print for racing cool.

- 85% polyamide, 14% polyurethane, 2% elastane
- Sublimated Yamaha and Alpinestars print
- Reinforced thumb patches
- Neoprene and TPR knuckles
- Stretch fourchettes



QM2-6MX01-E8 XX



QM2-6MX03-E8 XX



QM2-6MXP1-E8 XX

QM2-6MXP3-E8 XX

NEW



Mx Jersey Kids

Part No. QM2-6MX03-E8 **XX**

SIZE CODE: 10-12-14-16-17

The MX Kid's Jersey lets young ones hit the dirt in style! Created in collaboration with Alpinestars, this jersey features all-over sublimated print. Optimised for riding focus, the jersey's seamless cuffs, neck and underarms offer maximum comfort, with moisture wicking, mesh inserts and stitchless armpits for airflow.

- 98% polyester, 2% elastane
- Sublimated Yamaha and Alpinestars print
- Stretch inserts for free movement
- Seamless tape welded neck
- Laser perforations for airflow and ventilation
- Ergonomic semi-raglan sleeves

*No	Size	Age
10	116	5-6 yrs
12	128	7-8 yrs
14	140	9-10 yrs
16	152	11-12 yrs
17	158	12-13 yrs

MX Pant Kids

Part No. QM2-6MXP3-E8 **XX**

SIZE CODE: 10-12-14-16-17

Saddle the young ones up for some serious motocross with the MX Kid's Pants. Stretch panels offer total freedom in the seat, with ripstop fabric for durability when things get heavy. 3D knee construction enhances track performance, with an overlapping Velcro waist for a secure fit. Get them moving and on the way to MX greatness!

- 75% polyester, 14% polyamide, 5% goat leather
- 100% polyester lining
- Yamaha and Alpinestars print
- 4-way stretch inserts for free movement
- Inner waist silicone for grip
- Abrasion-resistant seat area

NEW



*No	Size	Age
10	116	5-6 yrs
12	128	7-8 yrs
14	140	9-10 yrs
16	152	11-12 yrs
17	158	12-13 yrs

NEW



MX Glove Kids

Part No. QM2-6MXG3-E8 **XX**

SIZE CODE: 10-12-14-16-17

A youngster's MX outfit wouldn't be complete without the MX Kid's Gloves! With a breathable stretch upper, silicone finger grip patches and stretch wrists, this is a glove for dominating the track with! Reinforcements on the thumb, palm and knuckles provide added protection, with a stylish all-over print for racing cool.

- 85% polyamide, 14% polyurethane, 2% elastane
- Sublimated Yamaha and Alpinestars print
- Reinforced thumb patches
- Neoprene and TPR knuckles
- Stretch fourchettes

*No	Size	Age
10	116	5-6 yrs
12	128	7-8 yrs
14	140	9-10 yrs
16	152	11-12 yrs
17	158	12-13 yrs

MX Cap Adult

Part No. QMB-26HH3-E8-00

Keep the sun (and mud) from your eyes and show your Yamaha passion with the MX Adult Cap. A 5-panel design, this blue cap features stylish graphics to match the new MX collection, with a unique peak design. Vent holes and an adjustable strap offer all-over comfort for all sizes.

- 100% cotton
- 3D Yamaha Racing logo
- White and cyan peak design
- One-size-fits-all

NEW

UNISEX





MX Adult Body Armour

Part No. A24-PR310-E1 **XX**

SIZE CODE: 0S-0M-0L-1L

A must-have in extra racing safety, the MX Adult Body Armour is a technical and reassuring item for every racer. Built with protection and flexibility in mind, this upper armour covers the shoulders, elbows and back with impact-absorbing shells on top of a lightweight and breathable stretch undershirt.

- 35% polyester, 25% EVA, 22% polypropylene, 10% PVC, 6% polyamide, 3% other fibres
- Adjustable and removable back protector
- Adjustable shoulder and elbow straps
- Chest protector CE EN 1621:2012 level 2
- Divided back protector CE EN 1621:2012 level 1
- Shoulder and Elbow protectors CE EN 1621:2012 level 1
- Durable elastane stretch mesh
- Lateral adjustment and kidney belt
- Natural back contour follows the spine
- Perforated shells for breathability and ventilation
- Special shell structure to absorb impacts

*No	Size
0L	L
0M	M
0S	XS - S
1L	XL - XXL

MX Kid's Body Armour

Part No. A24-PR411-E1 **XXX**

SIZE CODE: 10-12

Ideal for young riders getting to grips with their bike on track, the MX Kid's Body Armour offers superior and lightweight chest and back protection.



*No	Age	Size
12	6 - 10 years	116 -140cm
14	10 - 14 years	140cm-158cm



- 33% polyester, 23% EVA, 22% polypropylene, 14% thermoplastic elastomer, 5% polyamide, 3% other fibres
- Ages 6-10, and 10-14 year
- Backside CE EN 1621-2012 level 2
- Front side CE EN 1621-2012 level 1
- Shoulder and elbow CE EN 1621-2012 level 1
- Full zip with autolock closure
- Kidney belt to lighten the back protector
- Lightweight jacket with durable elastane stretch mesh
- Natural back contour follows the spine
- Perforated shells for ventilation
- Shells made of high-end, impact absorbing polymeric blends

70th Anniversary Collection

Celebrating an historic seven decades of Yamaha Motor, the 70th Anniversary is a special and unique capsule collection for true fans. Featuring tops, headwear, accessories and an exclusive MX jersey, there's no better way to celebrate the Yamaha Motor story at the track, at home, and around the world.

70th Anniversary Hoodie Unisex

Part No. B25-70ANN-W6 **xx**

SIZE CODE: 1S-0S-0M-0L-1L-2L-3L

Stylish and comfortable, the 70th Anniversary Unisex Sweater is perfect for everyday wear. A full-length zip and drawstring hood offer adjustable comfort, with unique anniversary branding that capture the Yamaha spirit. Wear it to the track or around the house!

- 53% cotton, 47% polyester
- Yamaha logos and front print
- 70th anniversary
- Side panel graphics



NEW

UNISEX



70th Anniversary T-shirt Unisex

Part No. B25-70ANI-W6 **XX**

SIZE CODE: 1S-0S-0M-0L-1L-2L-3L

The cornerstone of the 70th Anniversary collection, the 70th Anniversary Unisex T-Shirt is a stylish base layer for any occasion. Featuring unique branding and panels for the historic celebration, this classic crew neck tee is a must-have for a true Yamaha fan.

- 50% cotton, 50% polyester
- Yamaha logos and front print
- 70th anniversary
- Side panel graphics



70th Anniversary MX Jersey Men

Part No. A25-70ANN-W6 **XX**

SIZE CODE: 1S-0S-0M-0L-1L-2L

Over five decades since Yamaha's first MXGP world championship, the 70th Anniversary Men's Jersey brings the memories back in style! Created in collaboration with Alpinestars, this jersey features all-over sublimated anniversary print. Optimised for riding focus, the jersey's seamless cuffs, neck and underarms offer maximum comfort, with moisture wicking, mesh inserts and stitchless armpits for airflow. A jersey made to rock the dirt, Yamaha style!

- 98% polyester, 2% elastane
- Sublimated Yamaha and Alpinestars print
- Stretch inserts for free movement
- Seamless tape welded neck
- Laser perforations for airflow and ventilation
- Ergonomic semi-raglan sleeves

NEW



NEW

UNISEX

70th Anniversary Cap Adult

Part No. B25-ANN01-C3-00

Keep the sun from your eyes and show your Yamaha passion with the 70th Anniversary Adult Cap. A 5-panel design, this white cap features exclusive 70th anniversary branding on the front, with stylish side panel graphics. Vent holes and an adjustable strap offer all-over comfort for all sizes.

- 100% cotton
- 70th anniversary logo print
- Side panel prints
- One-size-fits-all

B25-70ANN-W6 **XX**A25-70ANN-W6 **XX**

Faster Sons Collection

A glorious tribute to Yamaha Racing heritage from the 1970s, the Faster Sons collection is a stunning neo-retro tribute to some of our greatest hits. From the 500cc Grand Prix years to the latest Sport Heritage machines, the Faster Sons ethos has driven us for seven decades. Ride into the future in style!

Faster Sons Hoodie Unisex

Part No. QMB-26FSA-B5 XX

SIZE CODE: 1S-0S-0M-0L-1L-2L-3L

A bold, bumblebee-style design in striking black, yellow and white, the Faster Sons Unisex Hoodie is an unmissable standout of the collection. Drawing inspiration from the latest XSR line, its lined drawstring hood provides comfort outdoors. Essential wearing for Faster Sons everywhere!

- 80% cotton, 20% polyester
- Embroidered and felt patch Yamaha and Faster Sons logos
- Enzyme wash for faded look
- Elastic hem and cuffs



NEW

UNISEX

Faster Sons T-shirt Unisex

Part No. QMB-26FSS5-B5 **xx**

SIZE CODE: 1S-0S-0M-0L-1L-2L-3L

An instant hit, the Faster Sons Unisex T-Shirt is a stunning, simple tee in black and yellow. Featuring the iconic Yamaha speed block design, this bold tee is everything awesome about retro Yamaha Racing.

- 100% cotton
- Printed chests graphic
- Ribbed neck

QMB-26FSA-B5 **xx**QMB-26FSS5-B5 **xx**



REVS Collection

The REVS Collection offers a dynamic collection of Yamaha lifestyle apparel. Using the latest technologies with a combination of premium materials, REVS is designed for supreme comfort and combines Yamaha quality and attention to detail. The 2025 range is clean and striking, offering fans the latest design in style.



REVS Outerwear Jacket Men

Part No. B25-RV112-B7 **XX**

SIZE CODE: 1S-0S-0M-0L-1L-2L-3L

Designed to protect from the winter elements, the REVS Men's Outerwear Jacket offers water and wind resistance with comfort inside a polyester shell and lining. Designed in REVS black and red colour contrast.

- Colour contrast outer shell 100% polyester
- Made of high water- and wind resistant fabric
- Comfort Fit

REVS Softshell Jacket Men

Part No. B25-RV113-B7 **XX**

SIZE CODE: 1S-0S-0M-0L-1L-2L-3L

Produced in slick black with red highlights, the stylish REVS Men's Softshell Jacket is a polyester elastane blend, fleece-lined to keep you comfortable outdoors.

- 96% polyester, 4% elastane softshell fabric
- Fleece lined for extra comfort
- Relax Fit





REVS Zip Hoodie Men

Part No. B25-RV110-B7 **XX**

SIZE CODE: 1S-0S-0M-0L-1L-2L-3L

Crafted in black, red and grey from a blend of cotton and polyester, the sports-inspired REVS Men's Zip Hoodie offers both fashion and function.

- 70% cotton, 30% polyester
- Double face sweat fabric, 270 grams
- Embroidered Yamaha branding and back graphic

REVS Polo Shirt Men

Part No. B25-RV109-B7 **XX**

SIZE CODE: 1S-0S-0M-0L-1L-2L-3L

Black with striking red and white highlights, the REVS Men's Polo Shirt is a smart-casual item that embodies the REVS style.

- 95% cotton, 5% elastane pique
- Comfort fit
- Seamless sleeves and hem





REVS T-Shirt Men

Part No. B25-RV101-B7 **XX**

SIZE CODE: 1S-0S-0M-0L-1L-2L-3L

Essential for everyday life, the REVS Men's T-Shirt blends modern style with iconic Yamaha design.

- 95% cotton, 5% elastane jersey, 180 grams
- Comfort fit
- Crew neck

REVS Outerwear Jacket Women

Part No. B25-RV212-B7 **XX**

SIZE CODE: 1S-0S-0M-0L-1L-2L

Designed to protect from the winter elements, the REVS Women's Outerwear Jacket offers water and wind resistance with comfort inside a polyester shell and lining.

- 100% polyester lining and tunnel padding
- 100% polyester outer shell
- Made of high water- and wind resistant fabric
- Comfort fit





REVS Zip Hoodie Women

Part No. B25-RV210-B7 **XX**

SIZE CODE: 1S-0S-0M-0L-1L-2L

Crafted in black, red and grey from a blend of cotton and polyester, the sports-inspired REVS Women's Zip Hoodie offers both fashion and function.

- 70% cotton, 30% polyester
- Hidden $\frac{3}{4}$ zipper
- Self-fabric hem

REVS Polo Shirt Women

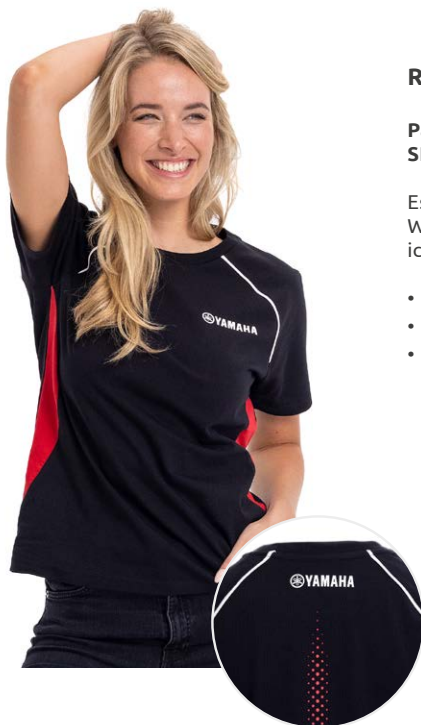
Part No. B25-RV209-B7 **XX**

SIZE CODE: 1S-0S-0M-0L-1L-2L

Black with striking red and white highlights, the REVS Women's Polo Shirt is a smart-casual item that embodies the REVS style.

- 5% cotton and 5% elastane
- Comfort fit
- Seamless sleeves and hem





REVS T-Shirt Women

Part No. B25-RV201-B7 **xx**

SIZE CODE: 1S-0S-0M-0L-1L-2L

Essential for everyday life, the REVS Women's T-Shirt blends modern style with iconic Yamaha design.

- 95% cotton, 5% elasthan
- Comfort fit
- Round neckline

B25-RV210-B7 **xx**



B25-RV212-B7 **xx**





REVS Zip Hoodie Kids

Part No. B25-RV410-B7 **XX**

SIZE CODE: 06-08-10-12-14-16-18

REVS style meets everyday comfort in the REVS Kid's Zip Hoodie. Aligned with the contemporary shape of the adult zip hoodies, this cotton and polyester mix keeps things comfortable and warm for outdoor use.

- 70% cotton, 30% polyester
- Double face sweat fabric, 270 grams
- Embroidered Yamaha branding and back graphic

*No	Size	Age
06	92	1,5-2 yrs
08	104	3-4 yrs
10	116	5-6 yrs
12	128	7-8 yrs
14	140	9-10 yrs
16	152	11-12 yrs
18	164	13-14 yrs

REVS T-Shirt Kids

Part No. B25-RV401-B7 **XX**

SIZE CODE: 06-08-10-12-14-16-18

Every member of the family can style the REVS look with the REVS Kid's T-Shirt. Designed in the same black with red and grey highlights as the adult t-shirts, kids can look cool and feel comfortable all day in this cotton and elastane blend.

- 95% cotton and 5% elastane
- Comfort fit
- Crew neck



*No	Size	Age
06	92	1,5-2 yrs
08	104	3-4 yrs
10	116	5-6 yrs
12	128	7-8 yrs
14	140	9-10 yrs
16	152	11-12 yrs
18	164	13-14 yrs



REVS Beanie Adult

Part No. B25-RV321-B7-00

Simple, stylish and practical, the REVS Adult's Beanie is made from ribbed cotton in a contemporary design that you can take everywhere, with thick knitting to keep in the warmth on colder days.

- 100% Cotton
- Ribbed Knitting
- Unisex, one size fits all adults

REVS Cap Adult

Part No. B25-RV311-B7-00

Keeping the sun out of your eyes with fashion, the cotton REVS Adult's Cap is designed for absolute comfort wherever you go.

- 100% Cotton
- Inner sweatband
- Peak with contrast sandwich colour
- Unisex, One size



UNISEX



REVS Special Edition Hoodie Adult Unisex

Part No. B25-RV111-C1 **XX**

SIZE CODE: 1S-0S-0M-0L-1L-2L-3L

Made from a soft cotton and polyester blend, the REVS Adult Unisex Special Edition Hoodie is designed with an eye-catching tricolor of black, red and white.

- 80% unbrushed cotton, 20% polyester, French Terry, 380 grams
- Embroidered Yamaha Chest Branding
- Unisex

REVS Special Edition Fleece Adult Unisex

Part No. B25-RV320-C1 **XX**

SIZE CODE: 1S-0S-0M-0L-1L-2L-3L

Made from polyester in a luxurious high pile fleece finish, the REVS Adult Unisex Special Edition Hoodie is designed with an eye-catching tricolor of black, white and red.

- 100% polyester, high pile Sherpa fleece
- Elastic cuffs
- Embroidered Yamaha chest branding
- Unisex

UNISEX



UNISEX

REVS Special Edition T-Shirt Adult Unisex

Part No. B25-RV123-B7 **XX**

SIZE CODE: 1S-0S-0M-0L-1L-2L-3L

Made from heavy yet soft 100% cotton jersey, the REVS Adult Unisex Special Edition T-Shirt is an essential everyday item.

- 100% Cotton
- Ribbed collar
- Unisex



REVS Essentials Unisex T-Shirt

Part No. B25-RV322-W0 **XX**

SIZE CODE: 1S-0S-0M-0L-1L-2L-3L

A simple and staple Yamaha item, the REVS Unisex Essential T-Shirt is a must-have base garment, perfect for regular wear.

- 100% cotton, single jersey, 170 grams
- Unisex comfort fit
- Ribbed collar



UNISEX



REVS Baby Giftpack

Part No. B25-KB602-E0 **XX**

SIZE CODE: 0A-01-03

Give the next generation the ideal start to becoming a Yamaha fan with the REVS Baby Giftpack. Featuring a cotton-elastane blended pyjama top and shorts with 'First Ride' prints, the pyjama set is extremely soft for a comfortable sleep. A pair of cotton, polyester and elastane socks also offer warmth for a toddler's feet.

- 75% cotton, 23% polyester, 2% elastane socks
- 95% cotton, 5% elastane jersey pyjamas and shorts
- Silicone print on socks



*No	Age
0A	0 months
01	2-4 months
03	6-8 months



Scooter Collection

Offering technical details, comfort and urban styling, the 2025 Scooter Collection presents a sporty city look that captures the contemporary design of the latest Yamaha Scooter line-up. A bold and sophisticated range of t-shirts and headwear that allows every fan to customise their urban style with ease.



TMAX T-Shirt Men

Part No. B25-SC106-B0 **XX**

SIZE CODE: 1S-0S-0M-0L-1L-2L-3L

Designed for unity with the latest Yamaha scooter, the TMAX Men's T-Shirt is a special edition item for urban travel. A cool and stylish addition to your TMAX life.

- 95% cotton, 5% elastane, single jersey, 180 grams
- Comfort fit
- Crew neck
- TMAX branding on chest and back

TMAX Cap Unisex Adult

Part No. B25-SC304-B0-00

Made from 100% cotton to ensure comfort, the stylish TMAX Adult's Cap features an adjustable strap, ventilation holes and an inner sweatband for easy wear wherever you are.

- 100% cotton cap
- 3D embroidered TMAX logo front
- Inner sweatband
- Sandwich peak with contrast color
- Unisex, one size fits all adults
- Ventilation holes



UNISEX

Nothing but The Max T-Shirt Unisex Adult

Part No. B25-SC107-E5 **XX**

SIZE CODE: 1S-0S-0M-0L-1L-2L-3L

An essential wardrobe item, the Nothing but The Max Unisex Adult's T-Shirt is perfect for regular wear and activity.

- 95% cotton, 5% elastane, single jersey, 180 grams
- Crew neck
- Printed Nothing but The Max branding on chest and arm
- Unisex



UNISEX

MOVE LIVE LOVE T-Shirt Unisex Adult

Part No. B25-SC314-F0 **XX**

SIZE CODE: 1S-0S-0M-0L-1L-2L-3L

Capture the Yamaha Urban Mobility spirit with the MOVE LIVE LOVE Unisex Adult's T-Shirt.

- 95% cotton, 5% elastane, single jersey, 180 grams
- Enzyme wash finish
- MOVE LIVE LOVE colour print on chest and nape
- Unisex fit





Hyper Naked Collection

Fusing urban fashion with the edgy styling of the street-focused Yamaha MT models, the Hyper Naked Collection makes a statement on The Dark Side of Japan (DSOJ). Dark tones are highlighted with striking cyan details in a range of apparel that every MT rider can set the dark alight with.

UNISEX



Hyper Naked Hoodie Unisex Adult

Part No. B25-MT111-B0 **XX**

SIZE CODE: 1S-0S-0M-0L-1L-2L-3L

Ready to rock the streets, the Hyper Naked Unisex Adult's Hoodie in stealth black features stylish details that stand out as classic MT inspiration.

- 80% unbrushed cotton, 20% polyester, French Terry, 330 grams
- Mesh inserts
- Relaxed unisex adult fit

Hyper Naked T-Shirt Unisex Adult

Part No. B25-MT102-B0 **XX**

SIZE CODE: 1S-0S-0M-0L-1L-2L-3L

Dark, edgy and detailed, the Hyper Naked Unisex Adults T-Shirt is essential for members of the Dark Side of Japan. A gritty urban look for the new generation of Hyper Naked rider.

- 100% heavy cotton, single jersey, 210 grams
- Crew neck
- Oversized unisex adult fit
- Printed DSOJ graphic on back



UNISEX



Adventure Collection

Designed with the Yamaha spirit of exploration as inspiration, the 2025 Adventure Collection has been made to deal with the terrain just like the modern classic Ténéré 700. With a range of apparel, that you can equip yourself for any adventure, anywhere, with the confidence in the quality of Yamaha apparel to see you over the Next Horizon.



Adventure T-Shirt Men

Part No. B25-AD116-E5 **XX**

SIZE CODE: 1S-0S-0M-0L-1L-2L-3L

The Adventure Men's T-Shirt captures the essence of exploration and the Next Horizon. A must-have for passionate adventurers and riders.

- 95% cotton, 5% elastane, single jersey, 180 grams
- Comfort fit
- Crew neck
- Printed world map design on back

Adventure Bucket Hat Unisex Adult

Part No. B25-TH005-00-00

A must-have addition to a traveller's wardrobe, the 100% cotton Adventure Unisex Adult's Bucket Hat is a classic shape with a reversible design. Choose from a camouflage-style world map design or blue with an eye-catching printed Ténéré logo and embroidered Yamaha logo.

- 100% Cotton
- Removable adjustable drawstring
- Reversible: all-over world map print or blue
- Unisex



Riding Gear

Whatever the season and wherever the journey takes you, there is no substitute for equipping yourself with supreme riding gear. In the decades since Yamaha Motor's story began in 1955, the same exquisite detail and innovation that goes into its motorcycles has been applied to its riding gear, offering sublime pieces that revs your heart and help keep you safe on the road. Engineered for protection, durability and style, the Riding Gear Collection is your first and best stop to dress for the road ahead.

NEW



Paddock Blue Riding Jacket Men

Part No. QMA-26RG1-E0 **XXX**

SIZE CODE: 0S-0M-0L-1L-2L

Channel the Yamaha spirit in a new way with the Paddock Blue Men's Riding Jacket. Presented in Yamaha blue with a cyan graphic inner, this jacket features shoulder elbow protection, with room for a back protector for riding assurance. Front pockets, a fixed lined hood and a jeans loop increase its functionality, while the 3D mesh offers breathability in all weathers.

- 3D air mesh
- 100% polyester
- Yamaha Racing and Monster logos
- REV'IT Seesmart Level 1 shoulder and elbow protectors
- Waterproof inner pocket
- Cuff holes for thumbs
- CE EN 17092-2020 class AA
- Fits REV'IT Seesoft back protector:
- Protector SM for jackets S-M
- Protector LX for jackets L-2XL
- Protector XL for jackets 3XL



Paddock Blue Men's Knitted Gloves

Part No. A24-PB111-E0 **XX**

SIZE CODE: 0S-0M-0L-1L-2L-3L

Offering protection and comfort with a lightweight build, the Paddock Blue Men's Knitted Gloves are absolutely ideal for shorter rides out on two wheels.

- 62% polyamide, 30% polyester, 7% polyurethane, 1% elastane
- CE EN 13594: 2015 level 1 KP*Not waterproof, no isolation
- 3D knitted and ventilated fabric
- Knitted Lycra cuff with strap closure
- Knuckle protection
- Touch screen material on index finger
- TPR (thermoplastic rubber) Yamaha branding



Paddock Blue Women's Knitted Gloves

Part No. A24-PB211-E0 **XX**

SIZE CODE: 1S-0S-0M-0L-1L

Technical and designed with protection and comfort at the front, the Paddock Blue Women's Knitted Gloves are stylish and lightweight.

- 62% polyamide, 30% polyester, 7% polyurethane, 1% elastane
- CE EN 13594: 2015
- 3D knitted and ventilated fabric
- Knitted Lycra cuff with strap closure
- Knuckle protection Level 1
- Touch screen material on index finger
- TPR (thermoplastic rubber) Yamaha branding



NEW



Faster Sons Leather Riding Jacket Men

Part No. QMA-26FS0-B5 **XX**

SIZE CODE: 0S-0M-0L-1L-2L

The Sport Heritage spirit in its purest form, the Faster Sons Men's Leather Riding Jacket, functional and effortlessly cool. Made from buffalo leather in black, yellow and white, the jacket sports shoulder and elbow protection, with room for a back protector for extra riding assurance. An exquisite piece of Yamaha riding apparel!

- 100% buffalo leather
- 100% cotton lining
- Stitched Yamaha branding
- Warrior Lite Level 1 shoulder and elbow protectors
- Fits Spidi Warrior back protector



Sports Heritage Men's Riding Gloves

Part No. A24-FS011-B0 **XX**

SIZE CODE: 0S-0M-0L-1L-2L

Giving Sport Heritage riders protection and comfort with a stylish finish, the Sport Heritage Men's Riding Gloves are ideal for shorter mid-season rides. A triple fabric blend features thermal insulation and knuckle protection for assurance, with Amara fabric for visor wiping and smartphone use. An essential for XSR riders who want to feel every moment.

- Goatleather 0.6-0.8 mm
- CE EN 13594-2015
- Knuckles level 1
- Touchscreen on finger





Scooter Riding Jacket Men

Part No. A25-SCJ01-F3 **XX**

SIZE CODE: 0S-0M-0L-1L-2L-3L

Commute and explore with comfort and protection in the Scooter Men's Riding Jacket. Designed in a slick blue-grey colour combo, this fully waterproof jacket offers level 2 shoulder and elbow protection, a removable thermo lining and neoprene-lined collar for both peace of mind and warmth in all weathers. A detachable hood offers adjustable comfort, with straps to adjust the arm fit. Ventilation on the arms and back keep you cool in warm weather. The jacket also pairs with Yamaha Scooter Riding Pants and Riding Gloves for the complete urban mobility outfit.

- 90% polyester, 10% polyurethane outer shell
- CE EN 17092-3: 2020 AA
- 100% waterproof laminated outershell with taped seams
- 2 arm zipper vents, 2 back vents
- 3 outer pockets, 1 inner pocket, 1 lining pocket
- Detachable hood
- Removable thermo lining
- Shoulder and elbow protectors: Fanom® SEK level 2 type B
- Thermal neoprene-lined collar
- Can pair with (optional) Scooter Pants ref. A25-SCP01-E4-00 and Scooter Gloves ref. A25-SCG01-E4-00





Scooter Riding Pants Men

Part No. A25-SCP01-E4 **XX**

SIZE CODE: 0S-0M-0L-1L-2L-3L

A must-have for urban commuting in all weathers, the stylish Scooter Men's Riding pants offer ventilation and comfort and are designed to fit over jeans and trousers. Fully waterproof in black laminated fabric, these over pants feature 2 pockets front and back, adjustable waist and hems, and side zips for breathability. The pants also pair with Yamaha Scooter Riding Jacket and Riding Gloves for the complete urban mobility outfit.

- 90% polyester, 10% polyurethane outer shell
- CE EN 17092-3
- 100% waterproof laminated outer shell with mesh lining
- 2 front pockets, 2 back zipper pockets
- Adjustable waist straps
- Side zippers, pant to be wear over your jeans
- Can pair with (optional) Scooter Jacket ref. A25-SCJ01-F3-XX, ref. A21-BJ101-B0-XX, ref. A21-BJ106-B0-XX, ref. A21-UR105-B0-XX, and ref. A21-BJ107-B0-XX and Scooter Gloves ref. A25-SCG01-E4-XX

Scooter Glove Men

Part No. QMA-26SC1-B0 **XX**

SIZE CODE: 0S-0M-0L-1L-2L-3L

Created for summer scooter riding, the Scooter Men's Gloves make navigating city streets a breeze. Touch screen enabled, the gloves include invisible knuckle protection and with palm sliders for added assurance in the seat. A short cuff with Velcro closure offers a comfy fit, while a flexible material blend allows breathability.

- 62% polyamide, 16% polyurethane, 15% chloroprene, 5% elastane, 2% polyester
- Printed Yamaha logo
- Embossed and laser-cut neoprene cuff
- TPR palm protection
- Touch screen capable



NEW





Scooter Riding Gloves Men

Part No. A25-SCG01-E4 **XX**

SIZE CODE: 0S-0M-0L-1L-2L-3L

Essential for mid-season urban travel and commuting, the black Scooter Men's Riding Gloves offer protection and comfort on the move. A flexible blend of leather and polyester materials ensures mobility and dexterity, with softshell knuckle protection for peace of mind. Touch screen material allows easy smartphone use, while the short cuff and polar fleece lining offer comfort in all urban conditions.

- 43% polyester, 37% goat leather, 14% cow leather, 4% polyamide, 1% polyurethane, 1% elastane
- Micro fleece palm
- Polar fleece lining on back
- Softshell knuckle protection
- Touch screen material
- Can pair with (optional) Scooter Jacket ref. A25-SCJ01-F3-XX and Scooter
- pant ref A25-SCP01-E4-XX

Men's Winter Gloves

Part No. A24-SC111-B4 **XX**

SIZE CODE: 0S-0M-0L-1L-2L-3L

Offering premium style and quality for cold weather riding, the multi-fabric Men's Winter Gloves feature insulation layers and leather for warmth and protection in two-tone black and grey. A perfect item for enjoying and controlling your tide in the cold.

- 61% polyester, 22% goat leather, 13% polyamide, 3% polyurethane, 1% elastane
- CE EN 13594:2015
- Knuckle protection Level 1
- Leather palm
- Printed Yamaha branding
- Strap closure
- Thermal protection: Waterproof and insulation (warmth) 100/40
- Touch screen material on index finger



Scooter Riding Jacket Women

Part No. A25-SCJ02-F3 **XX**

SIZE CODE: 0S-0M-0L-1L-2L

Commute and explore with comfort and protection in the Scooter Women's Riding Jacket. Designed in a stylish two-tone grey combo, this fully waterproof jacket offers level 2 shoulder and elbow protection, a removable thermo lining and neoprene-lined collar for both peace of mind warmth in all weathers. A detachable hood offers comfort, with straps to adjust the arm fit. Ventilation on the arms and back keep you cool in warm weather. The jacket also pairs with Yamaha Scooter Riding Gloves for the complete urban mobility outfit.

- 90% polyester, 10% polyurethane outer shell
- 100% waterproof laminated outershell with taped seams
- CE EN 17092-3: 2020 AA
- Shoulder and elbow protectors: Fanom (R) SEK level 2 type B
- Detachable hood
- Thermal neoprene-lined collar
- Elasticated bottom hem
- 2 arm zipper vents, 2 back vents



NEW

Scooter Glove Women

Part No. QMA-26SC2-B0 **XX**

SIZE CODE: 1S-0S-0M-0L-1L

Created for summer scooter riding, the Scooter Women's Gloves make navigating city streets a breeze. Touch screen enabled, the gloves include invisible knuckle protection and with palm sliders for added assurance in the seat. A short cuff with velcro closure offers a comfy fit, while a flexible material blend allows breathability.

- 62% polyamide, 16% polyurethane, 15% chloroprene, 5% elastane, 2% polyester
- Printed Yamaha logo
- Embossed and laser-cut neoprene cuff
- TPR palm protection
- Touch screen capable



Hyper Naked Riding Jacket Men

Part No. A25-HNJ01-F2 **XX**

SIZE CODE: 0S-0M-0L-1L-2L-3L

Infused with the street riding spirit, the Hyper Naked Men's Riding Jacket is a subtle and striking item in two-tone grey with cyan highlights. A durable polyester-polyurethane shell features shoulder and elbow protectors for peace of mind on the road, with reflective strips on the arms and detachable hood for extra road visibility. Four outer and two inner pockets offer ample room for essentials, while the removable thermal lining with underarm mesh allows comfort in changing climates. Ventilation panels allow further comfort in the saddle, while printed Yamaha, MT and DSOJ logos add a flourish of urban style to this super-cool jacket.

- 94% polyester, 6% polyurethane outershell
- CE class AA, compliant with EN 17092-3: 2020 standard
- 2 ventilation zippers on torso and 2 at the back
- 3 outside pockets, 1 forearm pocket, 2 inside pockets, including waterproof wallet pocket
- Detachable hood
- Reflective strips on hood and biceps
- Shoulder and elbow protectors: FANOM®
- Thermal lining with zippered cuff connections and underarm mesh
- Back protector not included (optional): Fanom® BFB-2 ref. A25-BPROT-G2-XX and IX-PRO BFB-2 ref. A21-PR300-B0-XX



Hyper Naked Glove Men

Part No. QMA-26HN1-B1 **XX**

SIZE CODE: 0S-0M-0L-1L-2L-3L

Get summer riding going with the Hypernaked Men's Glove. Designed in line with the MT line-up, this touch screen glove features a strong construction of goat leather and other durable fabrics, with palm protection and side wall reinforcement for riding assurance. Mesh on the upper side gives breathability, with a Velcro closure for security.

- 68% goat leather, 21% polyester, 9% nylon, 1% polyurethane, 1% cotton
- Embossed rubber Yamaha logo
- TPR palm protection
- Carbone knuckles
- Reinforced side walls
- Touch screen capable



Adventure Riding Jacket Men

Part No. A25-ADJ01-E4 **XX**

SIZE CODE: 0S-0M-0L-1L-2L-3L

Designed for multi-season use, the Adventure Men's Riding Jacket is lightweight and breathable, with ample protection for confident riding. Created in classic blue and earthy brown tones, it features a waterproof Drystar® membrane that can be used as an internal or external layer, removable sleeves for comfort and breathability, and multiple inner and outer pockets for essentials. Level 2 shoulder and elbow protection affords protection, with adjustable waist and sleeves for optimal comfort. Foldable front and back ventilation panels offer excellent breathability, with a long waist zip for attaching the jacket to the Adventure Riding Pants. The perfect jacket for the intrepid explorer!

- CE EN 17092-3-4 AA class with sleeves; A class without sleeves
- 98% polyester, 2% elastane
- 2 hand pockets, 1 lower pocket, 1 front pocket, 1 cargo pocket
- Foldable front and back mesh panels for maximum airflow
- Removable sleeves - when sleeves are removed, Flex Pro armour remains on ventilated mesh inner sleeves, for optimal protection
- Shoulder and elbow protectors: shoulder - Nucleon Flex Pro level 2; elbow - Nucleon Flex Pro level 2
- Waterproof and breathable Drystar® membrane included
- Zipper at bottom to connect with Pants ref. A25-ADP01-E4-XX
- Back protector not included (optional): Nucleon Plasma ref. A25-BPRTC-B6-XX
- Gloves to complete set (optional): ref. A25ADG01E4
- Chest protector not included.



Adventure Riding Pants Men

Part No. A25-ADP01-E4 **XX**

SIZE CODE: 0S-0M-0L-1L-2L-3L

Essential for adventuring in all weathers, the stylish, dark-toned Adventure Men's Riding Pants offer comfort, protection and durability wherever the adventure takes you. Made with a technical outer layer blend of polyester, elastane and goat leather, the pants feature a waterproof Drystar® membrane that can be folded back on itself, level 1 hip and knee for protection, and reinforced leg and seat areas. Cargo pockets let you carry essential items, while thigh ventilation panels afford good breathability in hot weather. A detachable suspender and shoulder belt help keep the pants in position, while a long waist zip allows them to connect with the Adventure Riding Jacket for the ultimate adventure apparel outfit.

- CE EN 17092-3 :2020 AA class
- 98% polyester, 2% elastane, 2% goat leather
- Waterproof and breathable Drystar®
- Hip and knee protectors: Bioflex level 1; knee - Nucleon Flex Pro level 2
- Reinforced lower leg, knee and seat areas for durability
- Thigh ventilation panels
- Back of knee, crotch and rear stretch panels
- Detachable suspender and shoulder belt to keep pants in position
- Zipper at bottom to connect with Jacket ref. A25-ADJ01-E4-XX





Adventure Riding Gloves Men

Part No. A25-ADG01-E4 **XX**

SIZE CODE: 0S-0M-0L-1L-2L-3L

Perfect for mid-season riding, the Adventure Riding Gloves offer protection and comfort on the move. Designed in tones of black, grey and brown, the gloves are made from a blend of goat leather and technical materials that ensures mobility and dexterity, with seamless knuckle protection and Aramid surface for confidence over rough terrains. A short cuff and perforated surface offer good breathability.

- CE EN 13594 : 2015 level 1 KP
- 35% goat leather, 35% polyamide, 15% polyurethane, 3% other
- Perforated surface for breathability
- Seamless knuckle protection
- Stretch back of hand reinforced with Aramid for flexibility and durability

Enduro Gloves Men

Part No. A23-SG011-B4 **XX**

SIZE CODE: 1S-0S-0M-0L-1L-2L-3L

A must-have for those rugged off-road adventures, the Enduro gloves for men offer protection, ventilation and comfort.

- 65% nylon, 30% polyurethane, 5% neoprene ventilating fabric
- EN 13594:2015
- Knuckle protection
- Reinforced palms and thumbs
- Thermoplastic Rubber (TPR) patches
- Velcro closure system on cuffs



MT Men's Winter Gloves

Part No. A24-MT110-B1 **xx**

SIZE CODE: 0S-0M-0L-1L-2L-3L

Inspired by the iconic and cutting-edge Yamaha MT motorcycle line-up, the MT Men's Winter Gloves are technical and sophisticated for cold climate riding.

- 41% polyester, 21% polyamide, 6% polyurethane, 1% elastane
- CE EN 13594: 2015 level 1 KP
- Amara fabric on finger to wipe visor
- Knuckle protection Level 1
- Nylon small blue parts on top of fingers
- Strap closure
- Thermal protection: Waterproof and insulation (warmth) 100/40
- TPR (thermoplastic rubber) Yamaha branding





Sport Touring Riding Jacket Men

Part No. A25-STJ01-F0 **XX**

SIZE CODE: 0S-0M-0L-1L-2L-3L

Designed to perform in all seasons, the Sport Touring Men's Riding Jacket is a technical and high-precision item for intrepid explorers. A tough polyester and polyurethane outer in two-tone grey contains a removable lining for adjustable comfort in mixed conditions. Shoulder and elbow protectors offer confidence and peace of mind when riding, while 6 pockets offer substantial space for items. Adjustable waist and wrists allow you to alter the fit with ease, while ventilation zippers offer excellent breathability. Pair with the Sport Touring Riding Pants and Gloves for the perfect road trip outfit.

- 90% polyester, 10% polyurethane outershell
- CE EN 17092;2020 Class AA
- 6 outer pockets (2 zippered pockets with front flap), 4 inner pockets, 1 waterproof wallet pocket, 2 pockets on detachable lining
- Insulation detachable lining with padding: 240 grams body, 80 grams sleeves
- Jacket contains shoulder and elbow protectors: Fanom® SEK LEVEL 2 TYPE B
- Snap buttons on elastic strap on bicep and forearms
- Ventilation zippers on tights with Fidlock® magnetic fastening system
- Jacket contains long zipper at bottom to connect with Pants as a set (optional) ref. A25-STP01-F0-XX and Gloves to complete set (optional): ref. A25-STG01-F2-XX



Sport Touring Riding Pants Men

Part No. A25-STP01-F0 **XX**

SIZE CODE: 0S-0M-0L-1L-2L-3L

A must-have for all-weather touring, the two-tone Sport Touring Men's Riding Pants offer comfort, protection and durability wherever the road takes you. Made with a technical outer layer blend of polyester and polyurethane, the waterproof pants feature a detachable insulation lining for changing temperatures, will hip and knee protectors provide confidence and peace of mind on the move. Two outer pockets allow you to carry essentials and are hidden inside ventilation zips for extra breathability. Detachable suspenders, Velcro ankle straps and elasticated wrist, thighs and knees offer excellent comfort for long rides, with a zipper to allow the pants to connect to the Sport Touring Men's Riding Jacket.

- 90% polyester 10% polyurethane outer fabric
- 2 outer pockets in ventilation zippers
- Ankle gusset for comfort
- CE 17092-3:2020 class AA
- Detachable suspenders
- Pants contains hip protector: level 1 type B, knee protector level 2 type B Fanom®
- Velcro strap to fit over boots
- Ventilation zippers on thighs with Fidlok® magnetic fastening system
- Pants contains long zipper at waist to connect with Jacket as a set ref (optional). A25-STJ01-F0-XX
- Gloves to complete set (optional): ref. A25-STG01-F2-XX



Sport Touring Riding Jacket Women

Part No. A25-STJ02-F2 **XX**

SIZE CODE: 0S-0M-0L-1L-2L

Designed to perform in all seasons, the Sport Touring Women's Riding Jacket is a technical and high-precision item for intrepid explorers.

A tough polyester and polyurethane outer in two-tone grey is waterproof and contains a removable lining for adjustable comfort in mixed conditions. Shoulder and elbow protectors offer confidence and peace of mind when riding, while 6 pockets offer substantial space for items. Adjustable waist and wrists allow you to alter the fit with ease, while ventilation zippers offer excellent breathability. Pair with the Sport Touring Riding Pants and Gloves for the perfect road trip outfit.

- 90% polyester, 10% polyurethane outershell
- CE EN 17092;2020 Class AA
- 6 pockets (2 zippered pockets with front flap), 4 inner pockets, 1 waterproof wallet pocket, 2 pockets on detachable lining
- Insulation detachable lining with padding: 240 grams body, 80 grams sleeves
- Jacket contains shoulder and elbow protectors: Fanom® SEK LEVEL 2 TYPE B
- Snap buttons on elastic strap on bicep and forearms
- Ventilation zippers on tights with Fidlock® magnetic fastening system
- Back protector not included (optional): Fanom® BFB-2: ref. A25-BPR0T-G2-XX and IX-PRO BFB-2: ref. A21-PR300-B0-XX
- Jacket contains long zipper at bottom to connect with Pants as a set ref. A25-STP02-F2-XX
- Gloves to complete set (optional): ref. A25-STG02-B1-XX



Sport Touring Riding Pants Women

Part No. A25-STP02-F2 **XX**

SIZE CODE: 0S-0M-0L-1L-2L

A must-have for all-weather touring, the two-tone Sport Touring Women's Riding Pants offer comfort, protection and durability wherever the road takes you. Made with a technical outer layer blend of polyester and polyurethane, the waterproof pants feature a detachable insulation lining for changing temperatures, will hip and knee protectors provide confidence and peace of mind on the move. Two outer pockets allow you to carry essentials and are hidden inside ventilation zips for extra breathability. Detachable suspenders, Velcro ankle straps and elasticated wrist, thighs and knees offer excellent comfort for long rides, with a zipper to allow the pants to connect to the Sport Touring Women's Riding Jacket.

- 90% polyester, 10% polyurethane outershell
- CE 17092-3:2020 class AA
- 2 outer pockets in ventilation zippers
- Ankle gusset for comfort
- Detachable suspenders
- Insulation detachable padding 80 grams
- Pants contains hip protector: level 1 type B, knee protector level 2 type B Fanom®
- Velcro strap to fit over boots
- Ventilation zippers on thighs with Fidlok® magnetic fastening system
- Pants contains long zipper at waist to connect with Jacket as a set ref. A25-STJ02-F2-XX
- Gloves to complete set (optional): ref. A25-STG02-B1-XX





Sport Touring Riding Gloves Men

Part No. A25-STG01-F2 **XX**

SIZE CODE: 0S-0M-0L-1L-2L-3L

Waterproof and ideal for mid-season riding, the Sport Touring Men's Riding Gloves provide flexibility, protection and comfort. Made from a blend of goat leather and technical materials, the three-tone gloves feature injected knuckle protection, an anti-twist system to prevent figure injury, TPR palm sliders and reflective inserts for improved visibility and style. Touch screen material allows smartphone use, with a visor wipe on the left hand to keep vision clear.

- 53% goat leather, 15% polyester, 15% polyamide, 11% chloroprene,
- 5% polyurethane, 1% elastane
- CE level 1K, compliant with EN 13594-2015 standard
- Waterproof, not insulated
- Injected knuckle protection
- Reflective inserts
- Touch screen material
- Visor wipe on left hand

Sport Touring Riding Gloves Women

Part No. A25-STG02-B1 **XX**

SIZE CODE: 1S-0S-0M-0L-1L

Waterproof and insulated, the Sport Touring Women's Riding Gloves are ideal for cold weather riding. Made from a blend of goat leather and technical materials, the three-tone gloves feature shell knuckle protection and Primaloft® insulation for safety and warmth. Neoprene cuffs and finger parts allow excellent flexibility, with Velcro wrist adjustment for changeable comfort. Pair with the Sport Touring Riding Jacket and Pants for the essential touring outfit.

- 44% goat leather 26% polyamide 18% chloroprene 8% polyurethane 2% elastane 2% polyester
- CE level 1KP, compliant with EN 13594-2015 standard
- Waterproof
- Back of hand Taslan ripstop fabric
- Neoprene cuffs and finger flex
- Primaloft® insulation
- Can pair with (optional) Sport Touring R Jacket ref. A25-STJ02-F2-XX and pants ref. A25-STP02-F2-XX



NEW

REV'IT Paddock Blue Backprotector FPB003

Part No. QMA-26BAC-E0 **XX**

SIZE CODE: 0S-0M-0L-1L-2L-3L

Essential to any rider's protection, the Rev'it Back Protector fits a range of riding jackets, including the Paddock Blue Men's Riding Jacket. Flexible, easy to fit and with ventilation, this is a must-own for an assured, safer ride.

- Nitrile and polynorbornene rubber
- Developed by REV'IT
- Usable in temperatures -20 - 40+ degrees C
- Protector SM for jackets S-M
- Protector LX for jackets L-2XL
- Protector XL for jackets 3XL



Size chart

Size S: for Women jackets from size XS to S

Size M: for women jackets from size M to XXL and Men jackets from size XS to L

Size L: for Men jackets from size XL to XXXL

Jackets where you can fit this Back protector

Jackets where you can fit this Back protector		GENDER
QMA26RG1E0XX	26 PB RIDE JACKET MESH MEN SKA	MEN
A25STJ01F0XX	25 ST JACKET MEN NACKA	MEN
A25SCJ02F3XX	25 SC JACKET WOMEN FALUN	WOMEN
A25SCJ01F3XX	25 SC JACKET MEN SKLAMPR	MEN
A25STJ02F2XX	25 ST JACKETN WOMEN ESLOV	WOMEN



Ixon Fanom® BFB-2 Back Protector

Part No. A25-BPR0T-G2 **XX**

SIZE CODE: 0S-0M-0L

Absolutely essential for safer riding, the Ixon Fanom®BFB-2 Back Protector is made from thermoplastic and designed to adapt to your body shape. An ultrafine profile allows the protector to easily fit inside jackets and suits, with cut outs and open cell structure for weight reduction and ventilation. Easily adjustable, it is also washable and can be recycled at the end of its life.

- 100% thermoplastic
- T+ (level of protection still efficient in hot temperatures)
- CE EN 1621-2:2014 class 2
- Flexible structure that adapts rider's morphology
- Ultrafine slim profile
- Cut outs to reduce weight and optimize absorption performance
- Open cell structure for air ventilation
- Washable

3 sizes available

Size S: body length max 172 cm, Waist Shoulder 36-41 cm - Fits Women's Jackets size XS and S

Size M: body length max 185 m, Waist Shoulder 41-46 cm - Fits Men's Jacket size XS, S, M, L // Fits Women's Jacket size M, XL, 2XL

Size L: body length max 200 cm, Waist Shoulder 46-51 - Fits Men's Jacket size XL, 2XL, 3XL

Size chart

Size S: for Women jackets from size XS to S

Size M: for women jackets From size M to XXL and Men jackets from size XS to L

Size L: for Men jackets from size XL to XXXL

Jackets where you can fit this Back protector

Jackets where you can fit this Back protector		GENDER
A25STJ01F0XX	25 ST JACKET MEN NACKA	MEN
A25SCJ02F3XX	25 SC JACKET WOMEN FALUN	WOMEN
A25SCJ01F3XX	25 SC JACKET MEN SKLAMPR	MEN
A25STJ02F2XX	25 ST JACKETN WOMEN ESLOV	WOMEN

Alpinestars Nucleon Plasma Back Protector

Part No. A25-BPRTC-B6 **XX**
SIZE CODE: 0M-0L

Offering class-leading protection, ventilation and impact absorption, the Alpinestars Nucleon Plasma Back Protector is a perfect choice for enhanced safety. Made from a blend of bio-based materials in bright red, the lightweight protector provides the optimum balance of energy dispersal and flexibility, and features a soft touch inner liner for comfort, with a soft textile coating on the back for easy fitting.

- 100% polyurethane in a blend of bio-based materials
- CE and UKCA level 2 certified
- Lightweight impact absorbing material
- Soft touch inner liner on the skin side for comfort
- Backed with a soft touch textile coating
- Highly ventilated for superior airflow and breathability



Size chart

Size M: For Men jacket size S-M

Size L: For Men jacket L-3XL

Jackets where you can fit this Back protector

A25ADJ01E4XX 25 ADV JACKET MEN TIRASSAS

GENDER

MEN



Trophy/Bering Back Protector Omega Level 1

Part No. A22-TS300-Y0 XXX

SIZE CODE: SM-XL

Adding safety to your riding jacket is easy with the Omega back protector. For the correct type of protector, please see the riding gear product details.

- 300 grams
- Ergonomic design
- Impact-absorbing technology
- OMEGA level 1
- PU Viscoelastic foam
- Temperature -10 till +40 degrees C
- Ventilation holes

Size chart

Size S/M: for Men jackets from size XS to L and for Women jackets from size XS to XXL

Size XL: for Men jackets from size XL to XXXL

Jackets where you can fit this Back protector

Jackets where you can fit this Back protector		GENDER
A22MT101B0XX	22 MT RIDE JACKET MEN BANGUI	MEN
A22UR101F0XX	22 UR MALE JACKET LISBON	MEN
A22UR201B0XX	22 UR FEM JACKET PHNOM	WOMEN
A23PJ011XXXX	23 FS RIDING SHIRT MEN VICENTE	MEN

Spidi Warrior Male Back Protector

Part No. A18-PR101-B0 **xx**

SIZE CODE: 0L-XL

The Yamaha-Spidi is a compact backprotector for male. CE certified for male jackets and for body height between 157 - 193 cm.

- 1 layer is stiff to spread the shock. The 2nd and 3rd layers are softer to reduce the transmission of energy to the body of the rider.
- Compact warrior code Z54-010
- Cubes shaping with soft inner surface shaped for air circulation
- Flexible and light protector with multilayered materials
- Measurement : height 41 cm and length 33 cm



Size chart

Size L/XL: for Men all jackets

Jackets where you can fit this Back protector

GENDER

Jackets where you can fit this Back protector	GENDER
A20FJ102B4XX 20 PB MALE RIDE SOFTSH HAMLETS	MEN
A21BJ107B0XX 21 MT MALE LEATHER JACK ULTRA	MEN
A20BJ105B0XX 21 SC JACK MALE SUMMER MAJURO	MEN
A21BJ104B0XX 21 SC JACK MALE WINTER CABO	MEN
A21BJ106B0XX 21 SC JACK MALE NET LIMA	MEN
A20FJ202B4XX 202 PB FEM RIDE SOFTSH POMPEI	MEN
A22RJ101E0XX 22 ADV MALE RALLY JACK ISIDRO	MEN
A19EJ101B7XX 19 MT MALE JACKET TEKST BOSTON	MEN
A24PJ100B0XX 24 FS LEATH JACKET MEN INA	MEN
A24PJ101C3XX 24 FS LEATH JACK MEN INARW	MEN
A24JJ102E0XX 24 PB RIDE SShell MEN RWAN	MEN
A23RJ101E0XX 23 ADV MALE RALLY JACKET DOIS	MEN

Hips Protector Male Warrior

Part No. A18-PR110-B0-LX

Yamaha-Spidi Warrior hips protectors for jeans and tech pants.

- 1 certified, modular design for better fit
- EN1621-1 Lev 1. certification
- Z180 hip protectors



Size chart

Size L/XL: for Men jeans

Pants where you can fit this Hip protector

Pants where you can fit this Hip protector		GENDER
A19EP110B0XX	19 RIDING JEANS MALE CONCORD	MEN
A19EP110E0XX	19 RIDING JEANS MALE CONCORD	MEN
A24PP102B1XX	24 FS CARGO PANT MEN FAS	MEN
A24PP102G2XX	24 FS CARGO PANT MEN FAS	MEN

Luggage

The Luggage collection features a range of storage items for wearing out and about with style. Designed in classic Yamaha tones, these bags are simple and functional for all occasions at the track, the beach, and everywhere else!

Paddock Blue Backpack

Part No. QMT-26TN3-E0-00

Keep the essentials safe and secure with the Paddock Blue Backpack. A classic Yamaha design with simple branding, the backpack offers ample storage space. A padded back makes for comfortable wearing, with adjustable straps and carry handle for extra function.

- 100% polyester, TPU coated bottom
- Printed Yamaha Racing logo
- Graphic print lining
- 27 litre capacity
- W 50 x H 29 x D 19 cm



NEW



NEW



Paddock Blue Fannyback

Part No. QMT-26TU3-E0-00

Waist Packs are still cool, right? The Paddock Blue Waist Pack is simple, blue and functional, offering you room for essentials during your travels. Keep money, passports, even bike keys close to you!

- 100% nylon
- 100% polyester lining
- Printed Yamaha Racing logo
- Graphic print lining
- W 34 x H 17 x D 10 cm
- 5.5 Litres



Paddock Blue Crossbody Bag

Part No. QMT-26TV3-B0-00

The bag style that everyone wants, the Paddock Blue Crossbody Bag is a neat design ideal for a touch of Yamaha class. Black with stand out Yamaha blue branding, this bag offers ample room for the essentials.

- 100% polyester
- Side zip pocket
- Adjustable strap 145 cm
- W 19 x H 20 x D 5.5 cm
- 2.1 litres

NEW



Paddock Blue XL Race Trolley

Part No. T25-PB003-E1-00

Durable, stylish and easy to handle, the Paddock Blue Race Trolley is perfect for trips to race tracks around the world and everywhere in between.

- 100% polyester
- Embossed lining with zipper
- Main compartment with 1 divider
- Top and side handles
- H 87 X W 38.5 X D 41 cm
- 123 litres



Yamaha Business Cabin Trolley Black

Part No. T22-LB020-B0-00

Finished in black, this Yamaha's lightweight business cabin trolley weighs just 2.95kg and gives a capacity of 38 liters.

- 100% ABS
- 2 TSA approved locks
- 55 x 40 x 23 cm incl wheels and handles
- Capacity 38 liters
- Fully-lined with integrated divider and pockets and packing straps in the base
- LaunchPad™ specially integrated compartment to protect your laptop
- MicroShield™ shock-resistant, high-quality ABS shell with scratch and scuff resistance
- Multi-stage telescopic handle
- Weight 2.95 kg





Paddock Blue Backpack

Part No. T24-JA002-E0-00

Robust, technical and striking, the Paddock Blue Backpack has been precisely designed to let you carry essential items with Yamaha style.

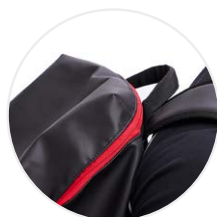
- 300 D polyester
- 47 x 35 x 13 cm
- 21 liters
- Adjustable strap
- Backside with foam and 3D mesh
- Printed Yamaha Racing branding
- Reversed zipper
- Welded pocket at front

REVS Backpack

Part No. T25-RV002-B7-00

Designed with a striking minimalist look, the REVS Backpack offers 26 litres of storage capacity in an easy-to-carry shape for leisurely activities.

- 100% polyester embossed lining
- 100% polyurethane imitation leather
- Foam-padded laptop pocket
- Hidden front pocket with zip
- H 52 X W 28 X D 18cm
- 26 litres





REVS Messenger Bag

Part No. T25-RV003-B7-00

Offering a snug fit for essential items, the REVS Messenger Bag is a compact luggage item ideal for regular travel.

- 100% polyester embossed lining
- 100% polyurethane imitation leather
- Detachable carry strap
- Main compartment with zipper closure
- Wrist strap
- H 29 X W 22 X D 4 cm
- 2.5 litres



REVS Versatile Helmet Bag

Part No. T25-AB002-B7-00

Light, compact and adaptable, the REVS Versatile Helmet Bag is ideal for carrying your helmet, groceries or other items.

- 100% polyester
- Adjustable shoulder strap
- Inner pocket with Velcro closure
- Printed Yamaha branding
- Soft lining for added protection
- 48 x 59cm
- 15-litres



Novelties

Offering a fun assortment of items to style your home, office and general lifestyle, the Novelties collection has everything from keyrings to flip flops and drinkware. Your one-stop Yamaha gift shop is right here!

Paddock Blue Cooler Backpack

Part No. QMT-26JB0-E1-00

Keep drinks and snacks cool on the move with the Paddock Blue Cooler Backpack. A spacious insulated interior gives you ample room, with a front pocket for any extras. How about a cold water during a hot day at the track?

- Polyester outer
- EPS foam padding
- PEVA insulation
- 26 x 15 x 43 cm
- Adjustable straps

NEW



NEW



Paddock Blue Luggage Tag

Part No. QMN-26JL0-E0-00

Spot your bag on the luggage belt immediately with the Paddock Blue Luggage Tag. Blue with Yamaha Racing branding, it attaches with a sturdy strap and includes a slide-in card for your important info.

- Made from PVC
- 3D Yamaha Racing logo
- 10.5 x 6 cm



Paddock Blue Foldable Cup

Part No. QMN-26JD0-E0-00

Ideal for exploring and all-round adventures, the Paddock Blue Foldable Cup offers easy portability for drinking. Simple, blue and functional!

- 100% silicone, PP lid
- Printed Yamaha Racing logo
- Secure lid prevents spills

NEW



NEW



My pit stop:
my refresh

YAMAHA
RACING



Brake for
a break

YAMAHA
RACING



Park your
drink here

YAMAHA
RACING



Slow down,
fuel up

YAMAHA
RACING

Paddock Blue Coaster Set

Part No. QMN-26JP0-E8-00

Bring some Yamaha colour to your space with the 4-piece Paddock Blue Coaster Set. With Yamaha Racing branding and a fun, unique slogan on each coaster, your place just got a new talking point!

- Made from Cork
- Yamaha Racing and slogans print
- Gloss finish
- 4mm thick
- 9.5 x 9.5 cm

Paddock Blue Flip Flops

Part No. QMN-26JF3-E0 XX

SIZE CODE: 37-38-39-40-41-42-43-44-45

Perfect for beach days, lounging at the pool or just around the house, the lightweight Paddock Blue Flip Flops offer water resistance and comfort for casual wear.

- PE sole, PVC strap
- Embossed Yamaha Racing logo
- Size 37-45 (EU)

NEW

UNISEX



NEW



Paddock Blue Tennis Set

Part No. QMN-26JA0-E0-00

Sometimes beach days just need a bit more action! The Paddock Blue Beach Tennis Set comprises two bats and a ball, printed with Yamaha Racing branding for an unmistakable design. Everyone on the beach will be asking to play!

- Printed Yamaha Racing logo
- 5mm thick
- 33 x 18.5 cm



Paddock Blue Foldable Umbrella

Part No. QMN-26JT0-E0-00

A sturdy design for all weathers, the 8-panel Paddock Blue Umbrella features simple Yamaha branding to stand out wherever you are. The track, the beach, the streets, this umbrella keeps the sun and the rain at bay!

- Polyester, alloy steel and aluminium
- Printed Yamaha Racing, Yamalube and speed block logos
- Folded: 380 x 96 mm
- Unfolded: 1260 x 600 mm

NEW



NEW



Paddock Blue Keyring

Part No. QMN-26JK0-E8-00

Yamaha and speed blocks - what's not to love? The Paddock Blue Yamaha Racing Keyring is a cool accessory keeping keys in style.

- Made from PVC
- 2D Yamaha Racing logo
- Black metal

Paddock Blue Tube Keyring

Part No. QMN-26JM0-E0-00

Designed in classic Yamaha blue and white, the Paddock Blue Keyring offers a sturdy rubber build with a metal ring, perfect for keeping keys attached and stand out. Never lose your keys again!

- Rubber construction
- 3D Yamaha Racing logo
- 16cm

NEW



NEW

Paddock Blue Wooden Balance Bike Kids

Part No. QMN-26MP6-E0-00

No one is too young to ride a Yamaha! The Kid's R9 Wooden Balance Bike is a cool, cute and fun way to get kids learning the art of riding. With a solid but lightweight wood construction and rubber wheels, it features stunning graphics inspired by the new Yamaha R9. Even adults would be jealous of this!

- Wood construction
- Rubber tyres
- Printed R9 graphics
- Saddle height: 36 cm
- 5.2 kg
- Suitable for ages 18 months - 5 years



Paddock Blue Gift Set

Part No. N25-JG004-E0-00

The perfect gift for lovers of Yamaha Racing, the Paddock Blue Gift Set contains a lanyard, necktube, keyring and water bottle to accessorise daily life with. Presented in iconic Racing Blue with striking Yamaha Racing branding, every item is sure to make an impression wherever they go!

Lanyard:

- Polyester webbing |900 x 200mm |Detachable buckle |Printed Yamaha Racing branding

Necktube:

- 100% polyester |490 x 255mm |Printed Yamaha Racing branding

Keyring:

- PVC |50 x 30x 6mm |Embossed Yamaha Racing branding with debossed tyre pattern
- Water bottle: Stainless steel |500ml |230 x 74mm





Marine Floating Keyring

Part No. N25-GK001-E0-00

Perfect for activities out on the water, the Marine Floating Keyring saves your keys from sinking! Made from silicone in classic Yamaha Blue, it features a rope for attaching keys and other waterproof items to. A must for lovers of the water.

- 100% Silicone
- Features Yamaha logo

Paddock Blue Sunglasses Adult

Part No. N23-JJ805-E1-00

A stylish eyewear piece for sunny days, the Paddock Blue sunglasses for adults are Yamaha Racing fashion at its best.

- Black frame with contrast racing blue arms
- Lenses with UV400 protection
- Polycarbonate frame
- Soft black carry pouch
- White Yamaha Racing branding





Paddock Blue Sunglasses Kids

Part No. N23-JJ605-E1-00

A cool blue eyewear for young ones, the Paddock Blue sunglasses make a real statement of Yamaha passion.

- Lenses with UV400 protection
- Polycarbonate frame
- Soft black carry pouch
- Striking Yamaha Racing blue design

Yamaha Racing Umbrella

Part No. N21-JR000-B4-00

Large Yamaha Racing umbrella, branded on both sides. Great to use on rainy days or on the grid, so you always look good and stay dry!

- Combines perfectly with the other items in the collection
- Comes with pouch
- Large umbrella
- Soft foam handgrip
- Yamaha Racing branded, inside and outside





Paddock Blue Water Bottle

Part No. N24-JD008-E0-00

Keep yourself hydrated from home to the track with the Paddock Blue Water Bottle. With 750ml capacity, the bottle features level markers with motivational text to help you stay topped up throughout the day.

- 750 ml plastic bottle
- Flip up straw
- Motivational text reminds you to stay hydrated
- Translucent Racing Blue

Paddock Blue Multitool Keyring

Part No. N24-JK004-E4-00

A perfect gift for bikers and fans of the outdoors, the Paddock Blue Multitool Keyring offers a range of useful functions on the go. A carry pouch makes it easy to attach to keys, bags, bikes and more to keep this incredibly useful tool with you at all times.

- Stainless steel
- Printed Yamaha Racing branding
- PU leather carry pouch
- Ruler, bottle opener, hex key and cutter





REVS Beach Sliders

Part No. N23-RV305-B9 **xx**

SIZE CODE: 37-38-39-40-41-42-43-44-45

Enjoy the beach and the sun while showing your Yamaha passion with the REVS beach sliders. A footwear essential, these sliders are contemporary and shaped for maximum comfort with an EVA & PU mix. Raised edges and moulded toe imprints ensure a firm hold, with strong Yamaha branding in a simple and clean style.

- Embossed white Yamaha branding
- EVA (Ethylene-vinyl acetate) and PU (Polyurethane)

Yamaha Racing Beach Sliders

Part No. N22-JF305-E8 **xx**

SIZE CODE: 37-38-39-40-41-42-43-44-45

From beach to track, you will stand out with this set of special Yamaha Racing beach sliders.

- Fabric: PU & EVA
- Features embossed logo
- High quality beach sliders
- Yamaha Racing blue colour



NEW



70th Anniversary Lanyard

Part No. QMN-25TK0-C1-00

Keep keys and paddock passes close to your chest with the 70th Anniversary Lanyard. Printed with the exclusive 70th anniversary design of the collection, this simple but super-useful accessory pays for itself!

- 100% polyester
- Printed Yamaha and 70th anniversary logos

Faster Sons XSR900 Keyring

Part No. QMN-26FS0-Y1-00

Sometimes a real XSR900 GP is just too big to attach your keys to. That's what makes the Faster Sons XSR900 GP Keyring so ideal! A simple silhouette design, the metal ring and chain will keep your keys secure and eye-catching.

- PVC
- 2D XSR 900 GP design
- Metal ring and chain

NEW





REVS Protective Keychain

Part No. N25-RK005-B7-00

A perfect gift for Yamaha bikers and fans, the REVS Protective Keyring is an ideal size for keeping your keys safe on the move.

- 100% neoprene
- 105mm x 70mm
- Durable for daily use

Hyper Naked Glowing Cup

Part No. N25-EB004-E0-00

Super-cool and perfect for the home or workplace, the 350ml Hyper Naked Glowing Cup is a 2-in-1 design. Activating the cyan clue design in direct sunlight, it also features a glow in the dark surface for a striking Dark Side of Japan look after hours.

- Double-walled stainless-steel
- Glow in the dark surface
- Quick sip lid
- 350ml





Hyper Naked Glow in the Dark Keyring

Part No. N25-EK004-E0-00

Small but striking, the Hyper Naked Glow in the Dark Keyring is the perfect gift. Shaped in iconic MT logo, a glow in the dark surface adds a touch of the dark side.

- 4.7 x 2.5cm, 2mm thickness
- Glow in the dark surface
- Made of Zinc Alloy

Hyper Naked PVC Keyring

Part No. N25-EK003-F3-00

An ideal gift for Yamaha MT fans, the Hyper Naked PVC Keyring keeps your keys together with a stylish Dark Side of Japan item. Made from PVC with an MT-07 side profile design, this novelty item stands out from the crowd!

- 100% PVC
- 2D MT-07 design





Sport Touring Tracer 9 GT Keyring

Part No. N25-TK003-B1-00

A perfect gift for Yamaha Sport Touring fans, the Sport Touring Tracer 9 GT Keyring is ideal for keeping your keys together and easy to find. Made from PVC with a Tracer 9 GT side profile design, it's guaranteed to catch attention!

- 100% PVC
- 2D Tracer 9 GT outline



www.yamaha-motor.eu

YOU EXPERIENCE

YOU SERVICES

follow us on:



Yamaha Motor Europe N.V.
Koolhovenlaan 101
1119 NC Schiphol-Rijk

P.O.Box 75033
 1117 ZN Schiphol
 The Netherlands

Tel: + 31 20 654 6000

Dealer

Disclaimer
 Always wear a helmet, eye protection and protective clothing when riding any type of powered vehicle. Yamaha encourages you to ride safely and respect fellow riders and the environment. All information in this brochure/catalogue is given for general guidance. Specifications, prices and/or appearance of Yamaha products and non Yamaha branded products are subject to change without prior notice. Non Yamaha branded products as depicted in this brochure/catalogue are fully developed and produced by respected third parties. Yamaha does not guarantee the availability of the displayed products in local markets. The product range may be limited in some countries and Yamaha has the right to discontinue products without prior notice. Where applicable, prices of Yamaha products may vary according to local requirements and conditions. No rights can be obtained from this information. Sizes of the apparel displayed are indicative – Yamaha recommends you to visit your local Yamaha dealer for the best fit. For further details and availability, please contact your local Yamaha dealer.

YAMAHA
 PARTS & ACCESSORIES

YAMALUBE

CONNECT YAMAHA-RACING.COM

26_DL1_PRE_ORD_EU-EN